

A GOODSPEED CHRISTMAS

*Jim Henson's*

EMMET  
LOTTER



A MUSICAL FOR THE WHOLE FAMILY

TM

A hand in a suit sleeve holds a glowing, ethereal sword vertically against a deep blue background. The sword has a bright, multi-colored glow, transitioning from yellow at the base to purple and blue at the tip. The hand is positioned in the lower right, with the fingers wrapped around the hilt. The background is a gradient of blue, with some faint, out-of-focus light spots.

# Always a Great Performance

## Big Firm Resources, Local Firm Attention.

You can count on our engagements to be well directed, our approach creative and innovative, and our people professional and polished.

Mahoney  
Sabol & Company, LLP  
CERTIFIED PUBLIC ACCOUNTANTS

AN INTERNATIONAL MEMBER OF  
**BDO  
SEIDMAN**

[www.MahoneySabol.com](http://www.MahoneySabol.com)

Middletown  
860.344.8883

Essex  
860.767.9999

Glastonbury  
860.541.2000

Somers  
860.763.1774



# Goodspeed Festival of New Artists

January 14-17, 2010

Every musical got its start somewhere. Don't miss your chance to see the next big hit at the Fifth Annual Goodspeed Festival of New Artists. Join us for staged readings of brand new works in this creative gathering of authors, actors, artists, and musical theatre lovers.

**It's something different...Come join us!**

COPYRIGHTS - TRADEMARKS

INTERNET LAW

Frederick A. Polner, Esq.  
POLNER LAW OFFICE  
16 Forest Hills Drive  
Madison

[fred@polnerlaw.com](mailto:fred@polnerlaw.com)

Old Saybrook's  
Premier Health Club



FITNESS CLUB

455 Boston Post Road  
at Saybrook Junction  
860.388.1200



# GOODSPEED MUSICALS®

## what's inside

**Jim Henson's Emmet Otter** | 5  
**Cast of Characters** | 6  
**Musical Numbers** | 7  
**Who's Who** | 8  
**Program Notes** | 14  
**History of the Goodspeed Opera House** | 28  
**Past Productions** | 28  
**About Goodspeed Musicals** | 29  
**William H. Goodspeed Legacy Society** | 30  
**The Goodspeed Opera House Foundation** | 31  
**Goodspeed Membership** | 32  
**Goodspeed Musicals Staff** | 37  
**For Your Information** | 38

Audio and video recording and photography are prohibited in the theatre.

Please turn off your cell phone, beeper, watch alarm or anything else that might make a distracting noise during the performance. Unwrap any candies, cough drops, or mints before the performance begins to avoid disturbing your fellow audience members or the actors on stage. We appreciate your cooperation.

Editor: Lori A. Cartwright



### ADVERTISING

OnStage Publications  
 937-424-0529 | 866-503-1966  
 e-mail: korlowski@jusbiz.com  
[www.onstagepublications.com](http://www.onstagepublications.com)

This program is published in association with OnStage Publications, 1612 Prosser Avenue, Dayton, Ohio 45409. This program may not be reproduced in whole or in part without written permission from the publisher. OnStage Publications is a division of Just Business, Inc. Contents ©2009. All rights reserved. Printed in the U.S.A.



# GOODSPEED MUSICALS®

*Gratefully Acknowledges the Following  
Supporters for 2009*

### CORPORATE SUPPORT

Bank of America  
 Blum Shapiro  
 Centerbrook Architects and Planners  
 COMCAST  
 Connecticut Light & Power Company  
 DeWitt Stern Group, Inc.  
 Dominion Resources Services, Inc.  
 Essex Savings Bank  
 Hoffman Audi  
 The Inn at Middletown  
 Liberty Bank  
 Mohegan Sun  
 National Alliance for Musical Theatre  
 NewAlliance Bank  
 Robinson & Cole LLP  
 The Suzio York Hill Companies  
 Updike, Kelly & Spellacy, P.C.  
 Webster Bank  
 WSHU Public Radio Group  
 WTNH News Channel 8

### FOUNDATION SUPPORT

Anonymous (1)  
 Acorn Alcinda Foundation, Inc.  
 The Adolph and Ruth Schnurmacher Foundation, Inc.  
 The Aeroflex Foundation  
 Aldo DeDominicis Foundation  
 The ASCAP Foundation - Irving Caesar Trust  
 The Christine E. Moser Foundation  
 Daphne Seybolt Culpeper Memorial Foundation  
 The Max Showalter Foundation  
 Maximilian E. and Marion O. Hoffman Foundation  
 The Nederlander Foundation  
 NewAlliance Foundation  
 Newman's Own Foundation  
 The Noel Coward Foundation  
 Public Welfare Foundation  
 The Rodgers and Hammerstein Foundation  
 The Samuel and Rebecca Kardon Foundation  
 SBM Charitable Foundation, Inc.  
 The Shubert Foundation, Inc.

### GOVERNMENT SUPPORT

With Support from the  
 Connecticut Commission on  
 Culture & Tourism  
 National Endowment for the Arts

### CONNECTICUT

1-888-CTVist / CTVist.com



### SPECIAL THANKS TO

Duncan Edwards of Audio Design International,  
 a division of ADI Group  
 Bella Rosa International, Inc.  
 Cross Island Ferry Services, Inc.  
 HarperCollins Publishers  
 HMS Media, Inc.  
 Leros Point to Point, Inc.  
 The Penguin Group  
 The Piano & Organ Warehouse  
 White Rocket Wine Company



presents



Produced in association with **THE JIM HENSON COMPANY**  
Executive Producer, **BRIAN HENSON**

Book by **TIMOTHY A. McDONALD** and **CHRISTOPHER GATTELLI** Music and Lyrics by **PAUL WILLIAMS**  
Based on the Book by **RUSSELL & LILLIAN HOBAN** From the Original Television Special Produced  
and Directed by **JIM HENSON** and Written by **JERRY JUHL**  
with

**JILL ABRAMOVITZ STANLEY BAHOREK SCOTT BARNHARDT JENNIFER BARNHART JENNA BERLONI**  
**STEPHEN BIENSKIE JUSTIN BOHON THOMAS CANNIZZARO LEO DAIGNAULT JESSICA ELOVSSON**  
**KATHY FITZGERALD CRAIG GLENN FOSTER MATTHEW FURTADO MEG GUZULESCU LISA HOWARD**  
**ANNEY OZAR JAMES SILSON DAVID STEPHENS**

Scenic Design by  
**ANNA LOUIZOS**

Costume Design by  
**GREGG BARNES**

Lighting Design by  
**BRIAN MacDEVITT**

Orchestrations by  
**DAN DeLANGE**

Arrangements by  
**GREG BROWN**

Additional  
Arrangements by

**LARRY  
PRESSGROVE &  
DAN DeLANGE**

Assistant Music  
Director  
**IAN SCHUGEL**

Assistant  
Choreographer  
**RAY DeMATTIS**

Sound by  
**JAY HILTON**

Production Stage Manager  
**BRADLEY G. SPACHMAN**

Casting by  
**STUART HOWARD, AMY SCHECTER,  
& PAUL HARDT, CSA**

Music Direction by  
**LARRY PRESSGROVE**

Directed and Choreographed by  
**CHRISTOPHER GATTELLI**

---

First Performance: December 5, 2009

---

Produced in association with **OSTAR PRODUCTIONS**

Made possible through the generosity of **TALE WAGGIN' PRODUCTIONS, HEATHER HENSON,** and **CHERYL HENSON**

Goodspeed Musicals

**MICHAEL P. PRICE**

**EDWARD BLASCHIK**  
Theatre Manager

**DONNA LYNN COOPER HILTON**  
Line Producer

**MICHAEL O'FLAHERTY**  
Resident Musical Director



**R. GLEN GRUSMARK**  
Production Manager

**DAN McMAHON**  
Director of Marketing &  
Public Relations

**CAITLIN A. QUINN**  
Director of Development

**BOB ALWINE**  
Associate Producer

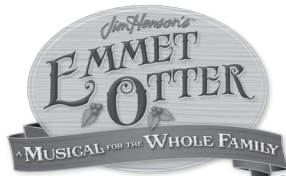
**HATTIE KITTNER**  
General Manager

**WILLIAM F. NIVISON**  
Director of Finance

*Goodspeed Musicals is dedicated to the heritage of the musical and the development of new works to add to the repertoire.*



presents



Produced in association with **THE JIM HENSON COMPANY**

Executive Producer, **BRIAN HENSON**

Book by **TIMOTHY A. McDONALD** and **CHRISTOPHER GATTELLI** Music and Lyrics by **PAUL WILLIAMS**

Based on the Book by **RUSSELL & LILLIAN HOBAN** From the Original Television Special Produced

and Directed by **JIM HENSON** and Written by **JERRY JUHL**

with

**JILL ABRAMOVITZ STANLEY BAHOREK SCOTT BARNHARDT JENNIFER BARNHART JENNA BERLONI  
STEPHEN BIENSKIE JUSTIN BOHON THOMAS CANNIZZARO LEO DAIGNAULT JESSICA ELOVSSON  
KATHY FITZGERALD CRAIG GLENN FOSTER MATTHEW FURTADO MEG GUZULESCU LISA HOWARD  
ANNEY OZAR JAMES SILSON DAVID STEPHENS**

Scenic Design by  
**ANNA LOUIZOS**

Costume Design by  
**GREGG BARNES**

Lighting Design by  
**BRIAN MacDEVITT**

Orchestrations by  
**DAN DeLANGE**

Arrangements by  
**GREG BROWN**

Additional  
Arrangements by  
**LARRY**

Assistant Music  
Director  
**IAN SCHUGEL**

Assistant  
Choreographer  
**RAY DeMATTIS**

**PRESSGROVE &  
DAN DeLANGE**

Sound by  
**JAY HILTON**

Production Stage Manager  
**BRADLEY G. SPACHMAN**

Casting by  
**STUART HOWARD, AMY SCHECTER,  
& PAUL HARDT, CSA**

Music Direction by  
**LARRY PRESSGROVE**

Directed and Choreographed by  
**CHRISTOPHER GATTELLI**

---

First Performance: December 5, 2009

---

Produced in association with **OSTAR PRODUCTIONS**

Made possible through the generosity of **TALE WAGGIN' PRODUCTIONS, HEATHER HENSON,** and **CHERYL HENSON**

---

Goodspeed Musicals

**MICHAEL P. PRICE**  
Executive Director

**EDWARD BLASCHIK**  
Theatre Manager

**DONNA LYNN COOPER HILTON**  
Line Producer

**MICHAEL O'FLAHERTY**  
Resident Musical Director



**R. GLEN GRUSMARK**  
Production Manager

**DAN McMAHON**  
Director of Marketing &  
Public Relations

**CAITLIN A. QUINN**  
Director of Development

**BOB ALWINE**  
Associate Producer  
**HATTIE KITTNER**  
General Manager

**WILLIAM F. NIVISON**  
Director of Finance

*Goodspeed Musicals is dedicated to the heritage of the musical and the development of new works to add to the repertoire.*

GOODSPEED MUSICALS | 2009 SEASON 5

# Musical Numbers

## Act One

### Scene 1, Jane's Bedroom

#### Scene 2, The River

*The One Bathing Suit* ..... Emmet & Ma

#### Scene 3, Main Street, Waterville

*Waterville* ..... Mayor Fox, Residents of Waterville

#### Scene 4, Mrs. Mink's Music Emporium

*At the Music Store* ..... Mrs. Mink, Mrs. Fox, Will Possum, The River Bottom Boys

*At the Music Store (Reprise)* ..... Emmet

#### Scene 5, The River

*Ain't No Hole in the Washtub* ..... Emmet & Ma

### Scene 6, The Otter Cabin & Old Lady Possum's Yard

#### Scene 7, Jane's Bedroom

#### Scene 8, The Otter Cabin

*When the River Meets the Sea* ..... Ma & Emmet

*Trust* ..... Emmet & the Squirrels

## Act Two

#### Scene 1, The Treehouse & The Otter Cabin

*Bar-b-que* ..... The Jug-Band

*Bar-b-que (Reprise)* ..... Ma, Hetty, & the Jug-Band

#### Scene 2, Outside Jane's House

*Trust (Reprise)* ..... Jane & the Squirrels

#### Scene 3, Outside the Opera House

*Alice Keep Dreaming* ..... Pa Otter

#### Scene 4, The Talent Show

*Squirrel-batics* ..... Madame Squirrel & the Squirrels

*Der Field Mouse* ..... Beverly Badger

*Bar-b-que* ..... Yancy

*Born in a Trunk* ..... Mrs. Mink

*Rabbit-tastic* ..... George & Melissa Rabbit

*Brothers* ..... The Jug-Band

*The Amazing John Deer* ..... John Deer

*Our World* ..... Ma

*River Bottom Nightmare Band* ..... The Nightmare Band

#### Scene 5, Along the River

*Brothers in Our World* ..... Ma, Emmet & the Jug-Band

#### Scene 6, Jane's Bedroom

*When the River Meets the Sea (Reprise)* ..... The Company

*There will be a 15-minute intermission between acts.*



# WHO'S WHO



**JUSTIN BOHON\*** (*Emmet Otter*) Broadway: Will Parker in *Oklahoma!*, directed by Trevor Nunn (Theater World and Fred Astaire Awards, Drama Desk and Outer Critics Circle nominations); Chip in *On The Town*; *9 to 5*, music by Dolly Parton; *Les Misérables*; *All Shook Up*; *The Producers*; and *Miss Saigon*. Tours: Freddy in *My Fair Lady* (Helen Hayes nomination), *South Pacific*, *Parade*. Regional: *The Times*, directed by Twyla Tharp; Bobby in *The Boy Friend*, directed by Julie Andrews. Film: *The Good Shepherd*, directed by Robert De Niro. Love to family and friends.



**KATHY FITZGERALD\*** (*Mrs. Alice Otter*) is thrilled to be back after 15 years! Broadway: *9 to 5*, Roz (OCC nomination); *The Producers*, Shirley Markowitz; *Swinging on a Star* (Drama Desk Nomination); *Damn Yankees*, City Center Encores. Off-Broadway: *Secrets... Regional: Night Club Confidential*, *All In The Timing*, *Quilters*, *The School for Wives*, *The Tempest*, *Twelfth Night*, *Pseudolus in A Funny Thing Happened...*, *Kathy and Moe Show*; *The Search for Signs...* TV/Film: "Curb Your Enthusiasm," "Four Eyes," "Family Plan," "Electric Company," and *The Producers*. Upcoming: *The Next Three Days* with Russell Crowe. For grandma Alice and daughter Hope.



**JILL ABRAMOVITZ\*** (*Mrs. Mink, Hetty Muskrat*) Broadway: *9 to 5*, *Martin Short: Fame Becomes Me*. Other: *Funny Girl* (Fanny, Westchester Broadway), *Up In The Air* (Kennedy Center), *See Rock City* (Barrington Stage), *How to Succeed* (Hedy LaRue, White Plains PAC), *Junie B. Jones* (Lortel), *Cam Jansen* (Lamb's). TV/Film: "30 Rock" (NBC), *Z-Rock* (IFC). Lyricist: BMI Workshop, Dramatists Guild Fellow, and Weston Playhouse New Musical Award for *The Dogs of Pripjat* with composer Aron Accurso. Jill has always wanted to work at Goodspeed and is thrilled to be here!



**STANLEY BAHOREK\*** (*Will Possum, Charlie Muskrat*) Broadway: Leaf Coneybear in *The 25<sup>th</sup> Annual Putnam County Spelling Bee*. Off-Broadway: *Inventing Avi* (World Premiere). New York: *See Rock City* (Transport Group Theatre), *Rent* (Mark), *Wood* (Chad). National Tour: Deaf West Theatre's *Big River*. Regional: *Into the Woods* (Jack, PittsburghCLO),

*Happy Days* (Ralph Malph, Goodspeed), *Ordinary Days* (World Premiere), Henry Krieger and Bill Russell's *Up In The Air* (World Premiere at The Kennedy Center), ... *Spelling Bee* (Boston and San Francisco companies), *A Little Night Music* (Henrik, TheatreWorks, CA), Music Theatre of Wichita. Member of Actors' Equity. Graduate of The University of Michigan. www.stanleybahorek.com



**SCOTT BARNHARDT\*** (*Wendell Porcupine*) is thrilled to be back in East Haddam! Goodspeed credits: Cosmo Brown in *Singin' in the Rain*, Buggins in *Half a Sixpence*, *Me & My Girl*, and the National Tour of *The Boy Friend* directed by Julie Andrews. Broadway/NY: Deaf West's *Big River* (2004 Tony Honor), *Bye Bye Birdie* (ENCORES!). Tours: Tokyo Philharmonic's *Disney On Classic* (Principal Soloist). Regional: *Forever Plaid* (Jinx, Cape Playhouse), *The Producers* (Carmen Ghia, Pioneer Theater), *Happy Days* (Paper Mill Playhouse).



**JENNIFER BARNHART\*** (*Madame Squirrel, Scatfish*) Goodspeed debut! Broadway: *Avenue Q* (OCC Award). Elsewhere: The Angel in *Angels in America* (Gallery Players), Olivia in *Twelfth Night*, Jack's Mother in *Into the Woods*, Cassie in *Rumors* (all at Connecticut Repertory Theater). TV: "Sesame Street," "Between the Lions," "Lomax: the Hound of Music" (PBS/CPTV) and "Law & Order: SVU." BFA in Acting/Concentration in Puppet Arts, University of Connecticut. Love & thanks to family & friends & Michael. This one's for my Grandma!



**JENNA BERLONI** (*Jane understudy*) is very excited to be making her debut at Goodspeed. She was recently in *The Miracle Worker* at The Ivoryton Playhouse playing a blind student and understudying the role of Helen, which she did perform. Jenna is in the seventh grade at HK Middle School. This summer she was Louisa in *The Sound of Music* for Artful Living Productions. Also for Artful Living, she was Young Susan in *Big*. At HKMS, she was Kathy in *Really Rosie* and Fern in *Charlotte's Web*. Jenna portrayed Young Andrea in *Sandman* at Curtain Call Theatre in Stamford and has appeared in 3 episodes of "Sesame Street."

\*Member of Actors' Equity Association, the Union of Professional Actors and Stage Managers in the United States.





# WHO'S WHO



**STEPHEN BIENSKIE\*** (*Russ, Stan Weasel*) is thrilled to be reprising his role as Stan Weasel this year at Goodspeed. Other Goodspeed roles include Harrison Floy in *High Button Shoes* and the role of the Leopard in The Norma Terris production of *Just So*. Credits range from hustling demo tapes in some of the sleaziest night clubs in the tri-state area, to a desk job in Public Relations, to cleaning toilets for a dance company in Brooklyn, to playing Rum Tum Tugger in the final company of *Cats* on Broadway. Check out: [www.stephenbienskie.com](http://www.stephenbienskie.com). Stephen dedicates this performance to the warm and wonderful memory of Gene Gattelli, the Pa Otter in all of us. ILYX08.



**JESSICA ELOVSSON** (*Swing*) is excited to join the cast of *Jim Henson's Emmet Otter* having just finished playing Felicity in *Seeing Stars* in the New York Music Theatre Festival. She is a recent graduate of Elon University where she most recently played the part of Maggie in *A Chorus Line*. She has been the park swing for Hershey Park's shows *The Ultimate Road Trip* and *Wild Country*. She is thrilled to be a part of such an exciting production! She thanks her wonderful family and her amazing boyfriend Sebastian for all their continuous support and love!



**THOMAS CANNIZZARO\*** (*Mayor Harrison Fox*) is very happy to be back at Goodspeed, where he has previously appeared in *Babes in Arms* and the Goodspeed *Cabaret*. Broadway: *Spamalot, Cabaret*. Tours: *Cabaret* (1st National), *Grease* (Brazil), *The Velveteen Rabbit* (TheatreworksUSA). Regional: Saint Michaels Playhouse (*Breakin' Up Is Hard To Do*), Ogunquit Playhouse (*Fiddler on the Roof*) North Shore Music Theatre (*Joseph and the Amazing...*), and with Cy Coleman and Pat Birch on *Lawyers, Lovers, and Lunatics*. Much love to Jennifer, Tessa, and Aengus.



**CRAIG GLENN FOSTER** (*Swing*) is excited to make his first appearance at Goodspeed. He is a recent graduate of Sam Houston State University with a BFA in Musical Theater. His recent credits include *Les Misérables* and *Hello, Dolly!* at TUTS; and *Jesus in Godspell* at Town Center Theater. He would like to thank his mom and dad, without whom none of this would have been possible.



**LEO DAIGNAULT** (*Doc Bullfrog, Chuck Stoat*) is thrilled to return to Goodspeed after appearing in the premiere of *Emmet Otter* last year. He is also fulfilling a life-long dream of working with The Jim Henson Company. His credits include Broadway: *Avenue Q*, (Nicky, Trekkie, Blue Bear, Brian); tours: *Avenue Q*, *The Full Monty* (Malcolm), *The Scarlet Pimpernel* (Farleigh), *Miss Saigon* (Gl); and regional theatre: *Dr. Seuss' How The Grinch Stole Christmas!* (Grinch), *Forever Plaid*, and *Plaid Tidings* (originating the role of Jinx in Chicago, Boston, Tokyo, San Diego, and Pasadena); and TV: "The Sopranos," "How to Marry a Billionaire," "Silk Stalkings," "Pensacola: Wings of Gold," and as one of Rosie O'Donnell's "Broadway Boys" appearing on "The Rachel Ray Show" and "The View."



**MATTHEW FURTADO\*** (*Harvey Beaver*) is thrilled to return to the Henson magic after being part of *Emmet Otter's* original company last season. An actor and puppeteer, other favorite credits include touring the world with *Sesame Street Live!* and *Dragon Tales Live!*. Regional: *Carousel* (Billy), *Red Noses* (Frappier). TV: "Today Show." Matt also presents his own one-man illusion show at events throughout the Northeast and serves as a magic consultant and host for other productions. Thanks to the creative team, family, and wife Erin. [www.MatthewFurtado.com](http://www.MatthewFurtado.com)



**MEG GUZULESCU\*** (*Jane*) of Connecticut is thrilled to be performing at the Goodspeed. Broadway: *Billy Elliot*, Original Broadway Cast (Karen Davidson); Patti LuPone's *Gypsy*, Revival Cast (Balloon Girl); Baby June/Baby Louise u/s). National Tour: *Les Misérables* (Young Cosette/Young Eponine, Gavroche u/s), *Irving Berlin's White Christmas* (Susan Waverly u/s). Regional: Hartford Symphony Pops (soloist). TV: NBC's "Kidnapped," ABC's "All My Children," CBS's "As the World Turns," Nickelodeon's "Wonderpets," PBS's "Finding Billy" documentary. Many thanks to Marianne Leone of TTA, my amazingly supportive teachers, and my friends and family for their love and support.

\*Member of Actors' Equity Association, the Union of Professional Actors and Stage Managers in the United States.



## WHO'S WHO



**LISA HOWARD\*** (*Gretchen Fox*) most recently appeared as Missy Hart in the new Broadway musical *9 to 5*. Other Broadway credits include: Lincoln Center's revival of *South Pacific* and *The 25<sup>th</sup> Annual Putnam County Spelling Bee*,

for which she won a Drama Desk Award for Outstanding Ensemble Performance. She toured the US in the national company of *Les Misérables*, where she played many performances as Madame Thenardier. She has played leading roles regionally at St. Louis MUNY, Olney Theater Center, Human Race Theater, and Kansas City Starlight. Lisa has appeared in numerous workshops, readings and concerts in NYC. She is a graduate of the Cincinnati College Conservatory of Music. [www.lisahowardnyc.com](http://www.lisahowardnyc.com).



**ANNEY OZAR\*** (*Old Lady Possum*) AKA Anney Fresh, is a creator and performer of costumes and puppets. She was nominated for six Daytime Emmy Awards for Costume Design/Styling with wins in 2007 and 2009 for "Sesame Street." Also

at the Jim Henson Company, Anney built Yancy Woodchuck for this production. Anney sings with *The Loser's Lounge* at Joe's Pub and makes music videos for her inflatable costume project *Space Kittys*. See her artwork and videos at [www.anneyfresh.com](http://www.anneyfresh.com).



**JAMES SILSON\*** (*Howard Snake*) is thrilled to reprise his role of Howard Snake in this year's production of *Emmet Otter!* As Puppet Master with Walt Disney Entertainment, James acts as choreographer and internal

consultant to the production teams in the creation, design, and implementation of puppetry in live entertainment worldwide. His role was recently expanded to include Show Director, opening new creative avenues. Highlights include *Finding Nemo: The Musical* (Puppet Master). Theater credits include *Godspell* (Jesus), *Footloose* (Travis), and *Little Shop of Horrors* (Audrey II Puppeteer). Film credits include *Musical Expressions* (Warner Brothers) and *Sesame Street 4D Movie Magic* (Jim Henson Company). Thanks, Chris, for having me back! And thanks to God and my family for all they do!



**DAVID STEPHENS\*** (*Yancy Woodchuck, Fred Lizard, Pa Otter*) is thrilled to be returning to Goodspeed! Stephens graduated with a Masters in Puppet Arts from the University of Connecticut in 2001 and since that time has

successfully carved out a career as a puppeteer both in live theater and on television. A resident of Atlanta, Georgia, Stephens splits his time between being a puppeteer and a banjo-playing singer/songwriter. He thanks Jerry Nelson and the Henson family for their continuing support and encouragement. [www.allandsproductions.com](http://www.allandsproductions.com)

**MICHAEL P. PRICE** (*Executive Director*) is now in his 41st year as Executive Director of Goodspeed Musicals. Under his direction the Goodspeed became known for its dedication to the American musical and the development of new works of this genre, including *Annie* and *Shenandoah*. He has received two special Antoinette Perry (Tony) Awards. He is chairman of the Connecticut Commission of Culture and Tourism. Mr. Price is a founding member and past vice president of the National Alliance for Musical Theatre. He is the founder of the League of Historic Theatres and served as its first president. He is the vice president of the American Theatre Wing and is a member of the Tony Awards Management Committee. He earned a B.A. from Michigan State, an M.A. from Minnesota University, and an M.F.A. from Yale. Michael is the recipient of honorary doctorates in fine arts, *honoris causa*, from Connecticut College and the University of Hartford.

**BOB ALWINE** (*Associate Producer*) Before joining Goodspeed, Bob worked as the Associate Managing Director of The Old Globe in San Diego, California, and the Director of Programming for The Ordway Center in St. Paul, Minnesota. While at the Globe he developed the national tour of *Stones in His Pockets* and at the Ordway he was the associate producer of the national tour of *Buddy: The Buddy Holly Story*. Bob holds an MFA in theater management and creative producing from Columbia University.

**DONNA LYNN COOPER HILTON** (*Line Producer*) is in her 22nd season at Goodspeed and assumed the duties of Line Producer in December 2006. She previously served as Goodspeed's Production Stage Manager and has worked on over 60 Goodspeed productions, beginning with *Wonderful Town* in 1988. As PSM she transferred Goodspeed's production of *Gentlemen Prefer Blondes* to Broadway. Donna Lynn currently serves as co-chair of the

\*Member of Actors' Equity Association, the Union of Professional Actors and Stage Managers in the United States.



## WHO'S WHO

Selection Committee for the National Alliance for Musical Theatre's New Works Festival and served as a consulting producer for the 2007 Festival. She has lectured at the Yale University School of Drama and Southern Connecticut State University. A native of North Carolina and a graduate of East Carolina University, Donna Lynn and her husband, Goodspeed Lighting & Sound Supervisor Jay Hilton, make their home in East Haddam with Jack.

**CHRISTOPHER GATTELLI** (*Director/Choreographer, Book*) most recently directed *Chance and Chemistry: A Tribute to Frank Loesser* at The Minskoff Theater starring Sir Paul McCartney, Jo Sullivan Loesser, and Audra McDonald. His award winning *Silence! The Musical* will premiere in London in January. He also directed *Departure Lounge* at The Public for SPF. Broadway: *South Pacific* (Tony and Outer Critics Circle nominations), *Sunday in the Park with George* (also West End), *The Ritz*, *Martin Short: Fame Becomes Me*, *13*, *High Fidelity*. Off-Broadway: *Altar Boyz* (Lortel, Callaway, Helen Hayes Awards), *Bat Boy: The Musical* (Lortel Award), *tick, tick...BOOM*. Chris dedicates this performance to his family.

**TIMOTHY A. McDONALD** (*Book*) Director, playwright, CEO of iTheatrics.com. Tim got his start by finagling neighborhood kids to perform home made musicals written and directed by Tim, and featuring songs from his collection of K-Tel albums. Tim's company (iTheatrics) provides educational consulting to clients such as Music Theatre International, Disney Theatrical Productions, and MacMillan-McGraw Hill, as well as Broadway, Off-Broadway, and touring productions (current roster: *Memphis*, *Little House on the Prairie*, *Finian's Rainbow*, and *101 Dalmatians*.) Credits Tim's mom cares about: Playwriting: *Jim Henson's Emmet Otter*, Roald Dahl's *Willy Wonka*, *The Musical Adventures of Flat Stanley*, *The Ant and the Elephant*, and *Frankly Ben*. Directing: *Dear Edwina* (Daryl Roth Productions) and *The Phantom Tollbooth* (Kennedy Center). For Music Theatre International (MTIshows.com) Tim developed the Broadway Junior, KIDS Collection, and School Edition musicals. With Disney Theatrical Productions, Tim helped develop twelve (and counting) animation titles from screen to stage. Future projects: *James and the Giant Peach* musical with Pasek and Paul.

**PAUL WILLIAMS** (*Music and Lyrics*) is an Oscar, Grammy, and Golden Globe winning Hall of Fame songwriter. "We've Only Just Begun," "Rainy Days and Mondays," "You and Me Against the World," "An Old Fashioned Love Song," "I Won't Last a Day Without You," and "Let Me Be The One" are among his timeless standards. His songs have

been recorded by such diverse musical icons as Elvis Presley, Frank Sinatra, Barbra Streisand, Willie Nelson, Ella Fitzgerald, David Bowie, Ray Charles, R.E.M., Tony Bennett, Sarah Vaughn, Johnny Mathis, Luther Vandross, and Kermit the Frog. *Bugsy Malone* and cult favorite *Phantom of the Paradise* are among his song scores. "The Rainbow Connection" from the children's classic *The Muppet Movie* and "Evergreen" from *A Star is Born* are two of his songs that grace the American Film Institute's list of the top 100 movie songs of all times. This Christmas, NBC will once again present "A Muppet Christmas: Letters To Santa," an original Christmas special with both story and songs by Mr. Williams, for which he received an Emmy nomination. He has been working on several theatrical works after completing the music and lyrics for the Garry Marshall musical *Happy Days*. An actor, performer, and public speaker, Paul predicts he'll be remembered for his stellar performance in the *Smokey and the Bandit* trilogy and for his lyrics to "The Love Boat" theme. In addition to his work as a songwriter, actor, performer and humanitarian, Paul is Chairman and President of ASCAP, the first and leading U.S. Performing Rights Organization (PRO) representing the world's largest repertory totaling over 8.5 million copyrighted musical works of every style and genre from more than 360,000 songwriter, composer and music publisher members. Paul is a devoted husband to writer Mariana Williams and a proud father; he considers his son Cole and daughter Sarah to be his best work.

**THE JIM HENSON COMPANY** has remained an established leader in family entertainment for over 50 years and is recognized worldwide as an innovator in puppetry, animatronics and digital animation. Best known as creators of the world famous Muppets, Henson has received over 50 Emmy Awards and nine Grammy Awards. Recent credits include the Emmy-nominated "Sid the Science Kid," "Pajanimals," and "Dinosaur Train" which recently premiered on PBS KIDS. Features include *The Dark Crystal*, *Labyrinth*, *MirrorMask*, and *Unstable Fables*. Television productions include "Fraggle Rock" and the sci-fi cult series "Farscape."

With additional locations in New York and London, The Jim Henson Company is headquartered in Los Angeles on the historic Charlie Chaplin lot, complete with soundstage and postproduction facilities. Independently owned and operated by the five adult children of founder Jim Henson, the Company is also home to Jim Henson's Creature Shop™, a pre-eminent character-building and visual effects group with international, television and advertising clients, as well as Henson Recording Studios, one of the music industry's top



## WHO'S WHO

recording facilities known for its world-class blend of state-of-the-art and vintage equipment.

The Company is currently in production on "Wilson and Ditch: Digging America," a webisode series for PBSKIDS.org featuring the Company's Emmy-winning animation technology, and the Company's Henson Alternative brand continues to produce *Puppet Up! - Uncensored*, a live puppet improvisational show that runs monthly at the Avalon Hollywood. The Company has also announced the creation of The Hub, a third party licensing banner established to acquire and service global consumer products programs for external brands and entertainment properties. [www.henson.com](http://www.henson.com)

**ANNA LOUIZOS** (*Scenic Design*) Broadway: *Irving Berlin's White Christmas*, *In the Heights* (2008 Tony nomination), *Curtains* (Drama Desk Nomination), *High Fidelity* (2007 Tony nomination), *Avenue Q*, *To Be Or Not To Be*, *Steel Magnolias*, *Golda's Balcony*. US tours: *In the Heights*, *White Christmas* (multiple cities). Off-Broadway: *Crimes of the Heart*; *Speech and Debate* (Roundabout); *Based on a Totally True Story*; (MTC); *Birdie Blue* (Second Stage); *Altar Boyz*; *The Foreigner* (Roundabout); *tick, tick... BOOM!* (Jane St) Regional: *Baby, It's You*, *Vanities*, *the Musical* (Pasadena Playhouse); *Minsky's* (Ahmanson); *Seven Brides*, *Baker's Wife* (Paper Mill) among others. Art Direction: "Sex and the City."

**GREGG BARNES** (*Costume Design*) Broadway: *Bye Bye Birdie*, *Legally Blonde* (2007 Tony nomination), *The Drowsy Chaperone* (2006 Tony Award, Drama Desk Award, Outer Critics Award, Olivier nomination), *Dirty Rotten Scoundrels*, *Flower Drum Song* (Tony nomination), *Side Show*. New York: *Sinatra* (Radio City Music Hall), *The Wizard of Oz*, *Radio City Music Hall Christmas Spectacular* (1994-2005), *Cinderella* and *The Merry Widow* (New York City Opera), *Pageant* (The Blue Angel and London's West End, Olivier Nomination), *The Kathy and Mo Show*, Eliot Feld's *Behold the Man*, Judith Jamison's ballet *Sweet Release* (Alvin Ailey). Regional credits include: *Peep Show* (Las Vegas), *Mame* (The Kennedy Center), *Lucky Duck* (San Diego Critic's Award), *Allegro* (Helen Hayes Award), and many others. Gregg was the first recipient of the Theatre Development Funds Young Master Award.

**BRIAN MacDEVITT** (*Lighting Design*) Recent NYC: *Joe Turner's Come and Gone*, *Nearly Ninety* with Merce Cunningham, *Blithe Spirit*, *You're Welcome America*, *Accent on Youth*, *Dr. Atomic* at the MET, *Speed-the-Plow*; *13 - A New Musical*; *American Buffalo*; *Puncture* by Nancy Bannon. Other: *Three Sisters* at the Abbey Theater. Dance:

*Like Two Kevins* by Tere O'Connor for Lyon Opera Ballet at The Jeffrey Ballet, American Ballet Theatre, 25 years with Tere O'Connor Dance, Lar Lubovitch. Recipient: Tonys, OBIE, Bessie, Outer Critics', Hewes Awards, Drama Desk, Et al. Film: *Cradle Will Rock*, Member: *Naked Angels*. Faculty: U of Maryland. Father: Jake and Georgie.

**JAY HILTON** (*Sound Design*) Jay is proud to be in his 25<sup>th</sup> season with Goodspeed. Since 1985 he has designed or provided sound for nearly 70 productions at the Opera House and well over 50 productions at Goodspeed's Norma Terris Theatre in Chester. Jay's sound effects have been heard on Broadway, national tours and at regional theatres from coast to coast. In addition to his design duties Jay serves as Goodspeed's Lighting & Sound Supervisor. Jay and his wife, Goodspeed's Line Producer Donna Lynn Hilton, make their home (and garden) in East Haddam. Jay would like to thank his splendid staff for their hard work and dedication.

**GREG BROWN** (*Arrangements*) is thrilled to be involved with *Emmet Otter*, a movie he has been watching since he had it on Beta tape. As arranger, his credits include last season's *Half a Sixpence* at Goodspeed, and *Oedipus For Kids!* at NYMF. As music director and musician, favorite credits include *The 25th Annual Putnam County Spelling Bee* (Broadway and Chicago companies), *Spamalot* (1st National), *The Boy Friend* (National Tour), *Romantic Poetry* (Manhattan Theatre Club), *No Dogs Allowed* and *A Year With Frog and Toad* (Atlantic Theater), ...*Charlie Brown* (Two River Theater), *Rent* (Weston Playhouse), *Abyssinia* (North Shore), as well as 16 other productions with the marvelous Goodspeed Opera House!

**LARRY PRESSGROVE** (*Music Director*) was music director and arranger for last year's premiere of *Emmet Otter's Jug-Band Christmas* and is thrilled to return to Waterville. Larry was music director/arranger for the Tony-nominated [*title of show*] and originated the role of "Larry." In addition, he has been music director for *Cats* (Broadway and National Tour), *Les Misérables* (National Tour) and conducted Colm Wilkinson's last performance of *Les Misérables* at the National Opera Theatre in Shanghai, China. He was assistant conductor for the tour of *The Phantom of the Opera* and has music directed various productions at the Ford's Theatre, the Repertory Theatre of St. Louis, and Cincinnati Playhouse in the Park. With playwright/lyricist Rachel Lampert, he composed the scores for *The Angle of the Sun* (NYMF 2007), as well as *Tony and The Soprano*, *Bed No Breakfast*, and *Comfort Food* (Kitchen Theatre, Ithaca NY).



## WHO'S WHO

**MICHAEL O'FLAHERTY** (*Resident Music Director*) is in his 18th season as Goodspeed's Resident Music Director, having conducted 35 musicals at the Opera House and five at The Norma Terris Theatre. His musical arrangement credits include *Gentlemen Prefer Blondes* (Broadway); *Reunion-A Musical Epic in Miniature*; Carol Hall's *To Whom It May Concern*; and *Red, Hot and Blue!* (GOH and Paper Mill Playhouse). He has worked at North Shore Music Theatre, Playwrights Horizons, Ford's Theatre, The Brooklyn Academy of Music, The Kennedy Center, Pittsburgh Public Theatre, The Smithsonian Institution, and was the musical supervisor and Cabaret Director of the Williamstown Theatre Festival for 11 years. Michael conducted the Goodspeed Musicals productions of *By Jeeves* and *Gentlemen Prefer Blondes* on Broadway. His original musical *Genesisius*, for which he wrote the music and lyrics, was recently showcased in NYC.

**IAN SCHUGEL** (*Assistant Music Director*) This is Ian's 11th Goodspeed production, having served as Assistant Music Director for *Half a Sixpence* and *42<sup>nd</sup> Street*. Orchestrations for *Broadway Backwards 3* and *4*, Associate Conductor for the National Tour of *The Producers*, Assistant Music Director for *The Party Come Here* at the New York Musical Theatre Festival. Music Direction at Perseverance Theatre in Juneau, Alaska, along with numerous theaters in Tampa, Florida. Graduate of Berklee College of Music in Boston.

**STUART HOWARD, AMY SCHECTER, & PAUL HARDT, CSA** (*CASTING*) has cast hundreds of shows over the past 25 years in the USA, Canada, and Great Britain, and has now begun work on Tom Stoppard's *Cyrano* for the National Theatre of France. Among their favorites—Broadway: *August: Osage County*, *Gypsy* (Tyne Daly), *Chicago* (Bebe Neuwirth, Ann Reinking), *Sly Fox* (Richard Dreyfuss), *Fortune's Fool* (Alan Bates, Frank Langella), and the original *La Cage aux Folles*; Off Broadway: *I Love You, You're Perfect, Now Change* and *The Normal Heart*. They have begun work casting *Death and the Maiden* for London's West End and are the casting directors for the new production of *West Side Story* currently on Broadway. They are very pleased to be casting for Goodspeed again this year.

**R. GLEN GRUSMARK** (*Production Manager*) is a native of San Diego, CA, and first became active in technical theatre while attending high school in central Vermont. He is a graduate of North Carolina School of the Arts, where he earned a scholarship for artistic excellence and a B.F.A. in technical production. Companies Glen has worked with include Brunswick Music Theatre, Blowing Rock Stage Company, Adirondack Scenic Studios Inc., and North Carolina Dance Theatre. Glen's Goodspeed debut was in 1989 as a carpenter for *Oh, Kay!*. He returned to Goodspeed in 1993 for *On the Town*. He is proud to be a part of the Goodspeed team and is grateful to his mother and father for their continued encouragement and support.

**BRADLEY G. SPACHMAN\*** (*Production Stage Manager*) hails from the Chicago area and is proud to be working with Goodspeed Musicals for his 15<sup>th</sup> season. He is enjoying his third year in the PSM's seat. In East Haddam, some of his favorite Opera House productions include *Singin' in the Rain*, *Big River*, and *George M!*. He also stage managed *O. Henry's Lovers*, *The Baker's Wife*, and *Lizzie Borden* at The Norma Terris Theatre. In addition, he has enjoyed working for several other regional theaters across the country, including Yale Repertory Theater and Connecticut Repertory Theatre. Outside of Connecticut, he brought Goodspeed's productions of *Pippin* and *The Boy Friend* to cities across North America. In Chicago, he has worked at the Goodman and Lookingglass theaters as well as on the original Chicago tryout of *Smokey Joe's Café*. Brad has never appeared on "Law & Order." Thanks to everybody who made this possible!

**DEREK MICHAEL DiGREGORIO\*** (*Assistant Stage Manager*) is thrilled to be back at Goodspeed this season. Past productions here include *Pippin*, *1776*, *Happy Days* (Norma Terris and Opera House), *Half a Sixpence*, *Big River*, *Emmet Otter's Jug-Band Christmas*, *42<sup>nd</sup> Street*, *Camelot*, and *A Funny Thing...Forum*. New York credits include *Applause* at City Center Encores!. Other regional credits include *Black Snow*, *Safe in Hell*, and *Comedy on the Bridge/Brundibar* (Yale Repertory Theatre); *Moon Over Buffalo* and *The Odd Couple* (Summer Theatre at Salem). Derek holds a BA from Salem State College and an MFA from Yale School of Drama. He is a proud member of Actors' Equity Association.

\*Member of Actors' Equity Association, the Union of Professional Actors and Stage Managers in the United States.



## PROGRAM NOTES



© 2008 The Jim Henson Company

TW & © 2005 The Jim Henson Company.

by Joshua S. Ritter, Education Director

### Welcome back to Frogtown Hollow!

The holiday season has arrived and so have all the lovable folks of Frogtown Hollow and nearby Waterville. We had to coax them back to Goodspeed Musicals with offers of free snake oil, prize money, and season subscriptions. They drove a hard bargain, yet we are delighted that they agreed to visit us and we hope that you are equally enchanted by their arrival.

For those of you who did not see last season's production, you may be wondering what kind of musical would be worth such a generous offer. This heart-warming story recounts the tale of poor Emmet and his Ma, two otters who secretly enter into a talent show with the intention of using the prize money to purchase a special holiday gift for the other. But the merits of the production are best expressed by Goodspeed Musical's Executive Director Michael Price: "Emmet and Ma's story of giving is one we are excited to share once again with audiences. The wonderful music, charming characters, and a cast of exceptional performers make for a festive celebration for all ages."

The Jim Henson Company originally aired the *Emmet Otter's Jug-Band Christmas* special in 1977 for HBO (penned by Jerry Juhl and produced and directed by Jim Henson). Then, it re-aired on CBS, ABC, and Nickelodeon in the 80s and 90s and had successful releases on video and DVD. Last year we presented the world premiere of

the musical stage production of *Emmet Otter's Jug-Band Christmas* and the response was overwhelmingly positive. Who could have guessed that our audience would fall in love with dancing otters playing down-home jug-band music? Director and Choreographer Christopher Gattelli helped explain why we should collaborate on this beautiful production.

Christopher was always of the firm belief that this classic holiday story would be ideal for combining the famous puppets from Jim Henson's Creature Shop with live actors and orchestra. Having worked here at Goodspeed on several projects in the past, Christopher also felt that our home here on the river would be the perfect place to work on the show. The musical is set in the woods, on a river, with an Opera House and a Riverside Rest. "Goodspeed audiences know this place," Christopher has said, "and they'll be surrounded by the atmosphere of Frogtown Hollow before they even walk in the doors of the theatre." We agreed with Christopher's vision and we were eager to begin collaborating on the production. Looking back on this decision, Michael Price shared the following: "Last year audiences experienced the joy and magic of Christmastime in this idyllic holiday setting. It truly is the perfect backdrop for such a timeless tale."

Co-book writer Timothy A. McDonald of iTheatrics and Paul Williams, who wrote the music and lyrics for the 1977 Henson TV special, worked with Christopher in this collaboration. Williams returned with all the original music as well as outstanding additions written just for our production. Director Gattelli also noted that Williams'



## PROGRAM NOTES

score “ranges from Country, to Bluegrass, to Rock, to Vaudeville, even Gospel, and every song [will] stay with you long after the curtain has dropped.” Williams previously wrote all the music for *The Muppet Movie* and *The Muppet Christmas Carol*.

The other essential partner in this theatrical endeavor was, of course, the Jim Henson Company. Under the direction of the Company’s chairman and Jim Henson’s son Brian, The Jim Henson Company has been an integral part of the production process. Brian has gathered a team of extraordinary puppet creators and craftspeople to bring the Henson Company’s well-known style of whimsy, warmth, and brilliance to the Goodspeed Opera House. Jim Henson’s Creature Shop’s puppets and costumes, created especially for this production, share the stage with talented performers as this heart-warming story unfolds once again.

The musical stage version of *Emmet Otter’s Jug-Band Christmas* was adapted from Russell Hoban’s classic children’s book by the same name. Moreover, Hoban’s tale was a twist on the famous short story *The Gift of*

*the Magi*. Despite the multiple variations on the narrative, in each version a timeless lesson rings true: through the characters’ struggle, we witness the desperation of those who live in poverty. However, despite their meager existence, we quickly learn that the love they share is more valuable than any tangible treasure.

*Emmet Otter* explores emotions that transcend rational thought. It touches our hearts to witness friendly otters sacrifice everything for each other because of their strong affection. The unassuming animals in *Emmet Otter* help communicate that self-sacrifice in the name of love is an enlightened gift indeed.

So sit back and enjoy Frogtown Hollow, where warm feelings, family, and the hope of the holiday season take the chill off a frozen river. It is a place where the exciting tune of a jug-band brings an infectious boost to the sprit, and where Emmet Otter and his friends will make a little bit of magic right before your eyes.

Happy Holidays!

# Enjoy the performance!

The law firm of  
Robinson & Cole is  
proud to support  
Goodspeed Opera House.

For more information  
call David Bogan at  
(860) 275-8262.



**ROBINSON & COLE** LLP  
ATTORNEYS AT LAW

RC.COM • HARTFORD • BOSTON • STAMFORD • NEW YORK • WHITE PLAINS • NEW LONDON • PROVIDENCE • ALBANY • SARASOTA

# **Amadeus**

CENTER FOR HEALTH & HEALING

---

---

- Acupuncture • Massage and Bodywork
- Natural Therapies • Hypnotherapy
- Isolated Stretching • Herbal RX



**We are medical massage and alternative health professionals.**

**New Haven**  
**787-0869**

Ask about our "Membership Program"

Refer to this ad and schedule a complimentary consultation! (\$35 value)

Out Calls Available!

**WE NOW ACCEPT INSURANCE FOR ACUPUNCTURE**

**[www.amadeuscenter.com](http://www.amadeuscenter.com)**



*Inspired Living ... Exciting Future*



Step into a world of charm and hospitality. The exceptional services of our senior residential community provide you with time for friends, family, and to explore many new opportunities that will inspire your life.

Visit Chester Village West soon to see our expansion and renovations, or view photos at [www.ChesterVillageWestLCS.com](http://www.ChesterVillageWestLCS.com)  
Click *Exciting Future*.



317 West Main Street • Chester, CT 06412  
(860) 526-6800



A Life Care Services Community



## Christine Rizzo

M.S. L.Ac. C.H.

Acupuncture & Chinese Herbal Medicine

*An holistic approach to optimal wellness and vitality*

Christine maintains a well-rounded, holistic practice offering treatments that pertain to the context of our modern lives.

Her work is characterized by frank, compassionate and informative conversation. Christine offers treatment for body, mind and spirit in a range of therapeutic modalities.

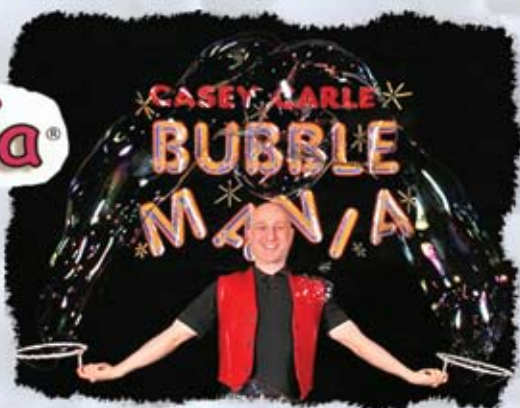
- Acupuncture
- Chinese Herbal Medicine
- Yoga
- Meditation

455 Boston Post Rd. Suite 203A  
Old Saybrook CT 06475  
860-961-5560

[www.connecticut-acupuncture.com](http://www.connecticut-acupuncture.com)

# Casey Carle's Bubble Mania®

**A fusion of comedy,  
art, science, jazz music  
and brilliant bubbling  
to amaze and amuse  
every age!**



## SEE

- \* Giant spheres and 20-foot Bubble Serpents
- \* Bubbles that bounce, dance and shimmy
- \* Jaw-dropping fog filled bubble sculptures
- \* Gravity defying blobs of bubble foam
- \* Bubble Spaceship, Crystal Ball, and Bubble Cube
- \* Soap Bubble Ping-Pong and more!



**"A True Master  
of his Craft"**  
- Cirque du Soleil

**"Bubble Artist  
Champion!"**  
- TV Tokyo

**"A Fantastic Act"**  
- Discovery Channel

**TWENTY EFFERVESCENT YEARS.  
THOUSANDS OF SATISFIED CLIENTS.  
MILLIONS OF HAPPY PEOPLE!**



**A Soap Bubble Spectacular for  
Theatres, Schools (K-6), Libraries,  
Banquets, Science Centers and More!**

4 pro entertainers to cover NY, New England & Beyond  
Casey Carle, Doug Rougeux, Seth Bloom, Christina Gelsone

**[www.bubblemania.com](http://www.bubblemania.com)**

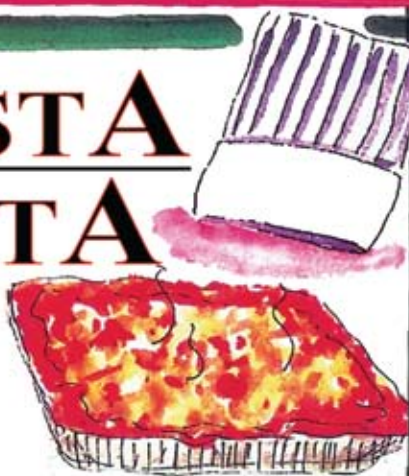
**860-632-9049**

**(BTW: Any mess is self-contained. No worries!)**

Also available: Elegant presentations for adult events  
Consulting services for film, TV & stage



# PASTA VITA



*The Place to Go for Gourmet to Go*  
**HOURS:**

Monday-Friday 8-6

Saturday 8-5:30

860-395-1452

[pastavita.com](http://pastavita.com)



*Old Saybrook, CT*

Residential & Commercial

**Remy S. Amadeo**  
"RSA" - Interior Designer

245 Bradley St. • 203-776-7369

No Project too Large or too Small

[www.rsainteriors.com](http://www.rsainteriors.com)

*Union League Lounge*

• Fabrics-Furniture • Restoration •

• Renovations • Home Stagings •

Faux Finishings • Antiques



# Chestelm

## Health & Rehabilitation

- Short Term Rehab Care
- 24 Hour Skilled Nursing Care
- Respite Care  
(short term stays to give caregiver a break)
- Outpatient Therapy
- Physical Therapy
- Occupational Therapy
- Speech Therapy
- Adult Day Care (transportation provided)

All Insurances Accepted—  
Medicare, Medicaid, All Private Insurances



CALL FOR INFORMATION **860-873-1455**

534 TOWN STREET • EAST HADDAM, CT

Live Jazz  
Sunday  
Brunch

Catering for  
all occasions

Gabrielle's

Pre Theatre Dinner



78 Main Street  
Centerbrook  
CT 06409

860-767-2440  
www.gabrielles.net

Give us your ticket stub  
and enjoy a complimentary  
glass of wine with dinner  
or lunch.



ACCLAIMED DINING  
AWARD-WINNING TAP ROOM  
ENTERTAINMENT NIGHTLY  
STUNNING WINE BAR  
CHARMING ACCOMMODATIONS

The **GRISWOLD INN**  
Since 1776

ESSEX, CONNECTICUT  
860.767.1776 • GRISWOLDINN.COM

The Swiss-made Automatic Air Commando by Xezo

LIMITED EDITION OF 500 PIECES EACH STYLE

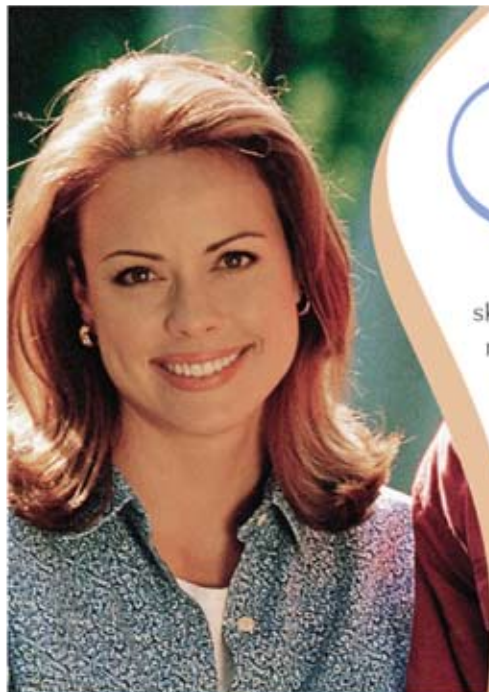


Limited-time offer: \$476

Made with sapphire-crystal glass  
and housed in a large 44mm  
diameter surgical steel case.

**XEZO**  
*Time Evolves™*

All products are limited editions and available at [www.xezo.com](http://www.xezo.com) or call 800-779-0102



Norwich Colchester Willimantic

SAVE 10% on OBAGI Skin Care Products



skin rejuvenation, botox®, radiesse®  
restalylne®, juvéderm®, perlane®  
face, brow & neck lifts  
facial hair removal  
obagi skin care system

Trust our **Board Certified** facial  
contouring specialists:  
Stephen M. Rouse, MD, FACS.  
Jerilyn S. Allen, MD.  
William T. Culviner, MD, FACS.

Call for a consultation **886.6610 ext.33**  
[www.thecenterforfacialcosmetics.com](http://www.thecenterforfacialcosmetics.com)

### Theater Special

All New!!

# Hillside

New  
Ownership!



# Sweet Shoppe

19 Main Street  
East Haddam

just a 3-minute walk from the Goodspeed!

(860) 873-8474

Coupon

Coupon

Buy 1 adult-size ice cream \* \* Get 1 FREE Scoop

# Dive into History at the Connecticut River Museum



Adventure, Discovery & History in the Making



## RIVER CRUISES

Explore the natural beauty and heritage of New England's Greatest River with on-water expeditions. Seasonal daily cruises and group tours available.



## INTERACTIVE EXHIBITS

Climb aboard a working replica of the the world's first submarine. Pedal the pedals, crank the cranks, and learn about its role in the American Revolution.



## EVENTS

They burned our ships and stole our rum! The British raid on Essex comes to life in the Burning of the Fleet exhibit. And don't miss the annual May parade and re-enactment.



## EDUCATION

Discover the River's rich history and unique environment. Hands-on workshops, school programs, summer camps, and adventures for all ages.



Connecticut River Museum

67 MAIN STREET  
ESSEX, CT 06426

860-767-8269  
[www.ctrivermuseum.org](http://www.ctrivermuseum.org)

DISCOVER NEW ENGLAND'S GREAT RIVER. 410 MILES OF WATER AND 450 YEARS OF HISTORY.



## WESTERLY, RHODE ISLAND



## WINNAPAUG COTTAGES [www.winnapaugcottages.com](http://www.winnapaugcottages.com)

AN ACTIVE ADULT COMMUNITY • 55+ MAINTENANCE FREE LIVING

Semi-Custom Detached Homes Starting in the high \$500,000s

One Level Living • Nestled within a 135 acre wooded nature preserve. Minutes to premier beaches, golfing, shopping and dining. Future plans for Independent Living, Assisted Living and recreational amenities.

Toll free 866-208-7558 ext. 1 • Tel. 401-315-2766 ext. 1 • [richard@winnapaugcottages.com](mailto:richard@winnapaugcottages.com)



## WESTBROOK INN *Bed & Breakfast*

*Voted The Most Elegant Inn*

Westbrook, CT  
800-342-3162 • [www.westbrookinn.com](http://www.westbrookinn.com)

*Visit Our Sister Inn*  
[www.bushnellhouse.com](http://www.bushnellhouse.com)  
Westbrook, CT

BUSHNELL  
HOUSE  
HISTORIC INN



## Share the magic with a Goodspeed Gift Certificate!



Always the right size.  
Always the right color.

## Always Appreciated!

Call or visit our Box Office 860.873.8668  
Purchase on-line anytime at [goodspeed.org](http://goodspeed.org)

*Gift Certificates are available in any denomination and may be redeemed for tickets to any of our performances.*

# LOGOWEAR

No Minimum Order

No Set-Up Fee

STARTING AT

# 19.99

PLUS SHIPPING & HANDLING



YOUR LOGO HERE

**Whether You Need  
1 shirt or 1,000**

*Ideal for Small Business Owners,  
Clubs or Organizations*

100% Satisfaction Guarantee

High Quality and Low Pricing

See Before You Buy

Quick Turnaround

Choose from apparel,  
hats, golf towels,  
blankets and **MANY** more

Visit our website at  
[www.OnStageLogos.com](http://www.OnStageLogos.com)



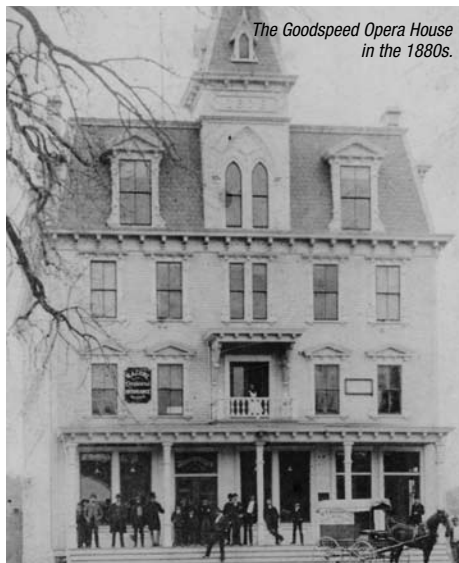
# HISTORY OF THE GOODSPEED OPERA HOUSE

The Goodspeed Opera House has endured as a majestic presence on the Connecticut River since it was built in 1876 by William H. Goodspeed, a shipping and banking magnate and avid theatre lover. Since that time the Opera House has lived two lives: the first as a bustling center of commerce, housing a theatre, professional offices, steamboat passenger terminal, and a general store; and the second, after a period of neglect and deterioration, as a magnificent professional musical theatre fully restored in 1963 to its original splendor.

Goodspeed's history goes back to its opening night on October 24, 1877, when a repertory group presented the comedy *Charles II* and the farces *Box and Cox* and *Turn Him Out*. Featured performers of the day were brought to East Haddam by steamboat, many directly from theatre in New York.

After William Goodspeed's death, the theatre was eventually sold and used as a storage depot for the State Highway Department. The building was marked for demolition in 1958, but local preservationists became interested and in 1959 The Goodspeed Opera House Foundation was organized to restore and reactivate the theatre. With the cooperation of the State of Connecticut and the support of donor-members, the Goodspeed Opera

House was restored and rededicated on June 18, 1963, with the opening of the musical *Oh Lady! Lady!!*



*The Goodspeed Opera House in the 1880s.*

## PAST GOODSPEED PRODUCTIONS

2001

Brigadoon  
\*They All Laughed!  
A Little Night Music  
\*+Double Trouble  
+Great Expectations  
+Lizzie Borden

2002

Dames at Sea  
Babes in Arms  
King of Hearts  
+Actor, Lawyer, Indian Chief  
\*+The Road to Hollywood  
+The Baker's Wife

2003

Me and My Girl  
Very Good Eddie  
A Tree Grows in Brooklyn  
+Stand By Your Man: The Tammy Wynette Story  
\*+Camille Claudel  
+O. Henry's Lovers

2004

Call Me Madam  
Where's Charley?  
Mack & Mabel  
□+All Shook Up  
+Princesses

2005

Seven Brides for Seven Brothers  
The Boy Friend  
Abyssinia  
\*+Flight of the Lawnchair Man  
+Amour  
+The Girl in the Frame

2006

Li'l Abner  
Pippin  
Pirates of Penzance  
\*+The 60's Project  
\*+Meet John Doe  
\*+Caraboo, Princess of Javas

2007

Singin' in the Rain  
High Button Shoes  
1776  
+Happy Days

2008

Happy Days  
Half a Sixpence  
Big River  
\*Emmet Otter's Jug-Band Christmas  
□+13  
□+The Story of My Life

2009

42<sup>nd</sup> Street  
Camelot  
A Funny Thing Happened on the Way to the Forum  
+Lucky Guy  
Jim Henson's Emmet Otter

For a complete list of Goodspeed Musicals' past productions from 1963 to the present, please visit our website at [www.goodspeed.org/shows\\_past.aspx](http://www.goodspeed.org/shows_past.aspx)

□ Went on to Broadway + Produced at The Norma Terris Theatre \*World Premiere



## ABOUT GOODSPEED MUSICALS

Goodspeed Musicals was first formed as The Goodspeed Opera House Foundation in 1959 to restore the 19<sup>th</sup> century Goodspeed Opera House as a professional theatre. Under the direction of Michael P. Price since 1968, Goodspeed has achieved acclaim as the home of musical theatre. Mixing classics by the Gershwins, Cole Porter and Jerome Kern with the very best of this country's newest musicals, such as *Annie*, *Man of La Mancha*, and *Shenandoah*, Goodspeed pioneered the practice of rethinking, restoring and revitalizing America's musical theatre heritage.

### **Goodspeed Opera House**

Dedicated to the preservation and advancement of musical theatre, Goodspeed produces three musicals April through December on its mainstage in East Haddam. Nineteen Goodspeed productions have gone on to Broadway, receiving more than a dozen Tony Awards. Goodspeed itself has been awarded two Special Tony Awards, one in 1980 for outstanding contributions to the American musical and a second in 1995 for distinguished achievement for a regional theatre.

Located in rural East Haddam on the Connecticut River, the historic Victorian-style Opera House takes musicals from the past and brings them to life for today's audiences.

### **New Musicals at The Norma Terris Theatre**

Goodspeed is at the forefront of shaping the future of musical theatre. At The Norma Terris Theatre, located in nearby Chester, Goodspeed develops new musicals and nurtures emerging artists. Goodspeed has launched over 50 musicals into the theatre world at The Norma Terris Theatre, giving composers and authors the opportunity to develop their material through actual production. Audience response is a vital part of this theatre. Regular input is actively sought through "Talkback" discussions with the creative staff, giving audiences the opportunity to play a part in creating a new musical.

### **The Scherer Library of Musical Theatre**

The Scherer Library of Musical Theatre is integral in perpetuating our national musical heritage. The Library preserves scores, sheet music, scripts, original cast recordings, playbills and theatre memorabilia. In addition to making this collection



Adam Heller in  
*A Funny Thing Happened on the Way to the Forum*, 2009  
Photo by Diane Sobolewski

available for study and research, the library provides the Goodspeed creative staff with original source material to assist in the faithful re-creation of musicals.

### **The Max Showalter Center for Education in the Musical Theater**

In 2002, Goodspeed Musicals established The Max Showalter Center for Education in the Musical Theater. The Center encourages and nurtures musical theatre artists and students by providing a unique and comprehensive array of training and educational programs to serve both the national and local academic communities. As a part of that mission, the Center conducts the annual Goodspeed Musical Theatre Institute in collaboration with New York University's Tisch School of the Arts and The Hartt School at the University of Hartford. In addition, it offers education pages on Goodspeed's website, allowing visitors to further participate in and appreciate the rich and vibrant world of musical theatre. For more information, please call Education Director Joshua Ritter at 860.873.8664, ext. 745.



# WILLIAM H. GOODSPEED LEGACY SOCIETY

## *Honoring Those Who Have Made a Commitment to Provide for the Future of Goodspeed Musicals*

By remembering Goodspeed through a planned gift, you can ensure that your legacy of support, so important to our production of highest quality musical theatre, continues for future generations. The William H. Goodspeed Society was created to recognize those who have included a future bequest to Goodspeed in their wills or estate plans.

Anonymous (6)  
Gus and Virginia Bodin  
Edward and Ruth Cape  
Michael Chaiklin  
Richard Goodman  
Norwick R. G. and  
Elizabeth Jane Goodspeed

Martha D. "Pepper" Hitchcock  
Mr. and Mrs. Robert P. Jones  
John Kartovsky  
Ruth Katz  
Dorothy Liepertz  
Andrew C. McKirdy  
Leslie and Lynne Nathan

The Maryann and Jane E. Ondovcsik  
Fund for the Preservation of the  
Victorian Goodspeed Opera House  
Peter and Janet Otto  
Michael and Jo-Ann Price  
Dr. Anne L. Rothstein and  
Ms. Jane Hellman  
Richard and Mary Schneller  
Mark and Roberta Velez

### **Goodspeed Musicals Funds and Endowments**

The funds and endowments listed below were established during lifetime, by bequest, or in memoriam with an outright gift to Goodspeed Musicals.

- The Frederick A. and Justine Millspaugh Catlin Family Fund
- The Arthur and Elizabeth Godbout Fund for the Support of the Music Department
- The George S. and Charmian A. Goodspeed Memorial Fund
- The A. Nicholas Groth, Ph.D. Charitable Gift Annuity\*
- The Richard G. and Elizabeth F. Kehoe Charitable Gift Annuity\*
- The Charles R. Lindberg Family Fund
- The Salvatore Marzano, Jr. Memorial Student Scholarship Fund
- The Elaine McKirdy Intern/Apprentice Endowment
- The Charlotte and Gerald Sandler Educational Endowment
- The Scherer Library of Musical Theatre Fund
- The Max Showalter Center for Education in the Musical Theater
- The Ashton M. Tenney, Jr. Memorial Annuity Fund\*

*The donors receive an income stream during their lives and a named fund or endowment will be created when the annuity reverts to Goodspeed Musicals. For further information on how you can ensure your legacy of support with a Planned Gift to Goodspeed Musicals, please contact Gloria Gorton, Director of Major Gifts, PO Box A, East Haddam, CT 06423, 860.873.8664, ext. 366 or e-mail [gloria.gorton@goodspeed.org](mailto:gloria.gorton@goodspeed.org).*

### **Special Gifts**

Goodspeed Musicals is grateful to those who have made a special gift during the 2009 season. They include: Suzanne and Donald Joffray  
Benjamin B. Liveten Charitable Grand Nephew Trust  
Carol Sirof

### **Memorial Gifts**

In Memory of Leonard Blake, given by The Goodspeed Guild and Nancy L. Planeta  
In Memory of Marie Dombroski, given by Merle and Ron Bernstein

Goodspeed fondly remembers those who left a bequest or in whose honor a memorial fund was established. Their love of musical theatre and our institution is an example to us all.

- The Milon Barnes Memorial Fund
- Leonard N. Blake
- Albert D. Firestone
- Henry Sage Goodwin Memorial Fund
- The Edith O. Haynes Trust
- Martha C. Hinkel
- Thomas W. Holton Memorial Fund
- The Adrienne I. Koch Revocable Trust
- William J. Kochen Memorial Fund
- The Edward Mills Memorial Fund
- Edith L. Nyman
- Rochelle Richilson
- Barbara V. Ross
- Bertha L. Rottmann
- Martha Shattuck



# THE GOODSPEED OPERA HOUSE FOUNDATION

*The Goodspeed Opera House Foundation, chartered by the State of Connecticut as a charitable, educational, non-profit organization, is charged with the responsibility of maintaining the Goodspeed Opera House both as a historic landmark and as a living theatre. The objective of the Foundation is the establishment and development of a nationally recognized regional theatre of which its members and supporters can be justly proud.*

## **2009 BOARD OF TRUSTEES**

Francis G. Adams, Jr.  
John Barlow  
Myron R. Bernstein\*  
David W. Bogan  
Theodore S. Chapin  
Kay Knight Clarke  
Alvin Deutsch  
Christopher J. Dodd  
David F. Frankel  
Robert B. Friedman  
Norwick R. G. Goodspeed\*\*  
Helen Gray  
John H. Hamby  
Jeffrey S. Hoffman  
Lynde S. Karin  
John S. Kartovsky\*\*  
Mary Ellen Klinck  
Mark Masselli  
F. Patrick McFadden, Jr.  
Lawrence McHugh  
Robert Roy Metz\*  
Robert F. Neal  
Eric D. Ort  
Muriel S. Paris  
Michael P. Price  
Susan Scherer  
Richard F. Schneller\*\*  
H. William Shure  
Viola Tagliatella  
DeRoy C. Thomas  
Mark Wainger  
John F. Wolter  
Dona D. Young

\**Emeritus Trustee*

\*\**Honorary Trustee*

## **OFFICERS**

M. Jodi Rell, *Ex Officio*  
*Honorary Chairman*  
DeRoy C. Thomas, *Chairman*  
*of the Board*  
Francis G. Adams, Jr., *President*  
Jeffrey S. Hoffman, *Vice President*  
Dona D. Young, *Vice President*  
Eric D. Ort, *Secretary*  
Mark Masselli, *Treasurer*  
McLaughlin & Stern, *General Counsel*

## **PAST PRESIDENTS**

Marian D. Terry  
Muriel W. Selden +  
Bernard Knollenberg  
Noel M. Davis +  
Hal James  
Beatrice H. Rosenthal+  
Alan C. Davis  
Noel B. Gerson  
John H. Hamby +  
Norwick R. G. Goodspeed +  
Richard F. Schneller +  
Robert F. Neal +  
DeRoy C. Thomas  
*+ also served as Chairman of the Board*

## **GOODSPEED COUNCIL**

Carol Adams Dahlke  
Rod Duxbury  
Ilia M. O'Hearn  
Leonard H. Suzio  
Marty Travis  
William F. Turner

## **THE SCHERER LIBRARY OF MUSICAL THEATRE AT GOODSPEED**

The Scherer Library of Musical Theatre at Goodspeed perpetuates our national musical heritage through the careful preservation of vital performance materials: scores, sheet music, scripts, original cast recordings, playbills, and theatre memorabilia. Its efforts are enhanced by the support of the Library Advisory Board. The Library owes its existence to the generosity of those who have contributed their personal collections and it gratefully accepts materials related to musical theatre.

## **2009 LIBRARY ADVISORY BOARD**

Ken Bloom  
Theodore S. Chapin  
Alvin Deutsch  
Brian Drutman  
David Hummel  
Michael A. Kerker  
Robert Kimball  
Bruce Pomahac  
Bill Rosenfield  
Henry S. Scherer, Jr.  
Steven Suskin

## **THE MAX SHOWALTER CENTER FOR EDUCATION IN THE MUSICAL THEATER ADVISORY BOARD**

Gordon Greenberg  
Robert R. Metz  
Jane Percy  
Peter Walker  
Nancy Wolf



# GOODSPEED MEMBERSHIP

Did you know that your ticket price covers less than 60% of the actual cost of our performances? You might think of it as getting everything after intermission **FOR FREE**. More accurately-everything in the second half of the production is made possible by the generosity of Goodspeed contributors.

**THANK YOU**, Goodspeed Members! Goodspeed is over 7,000 members strong – for a complete listing, please visit our website at [www.goodspeed.org](http://www.goodspeed.org).

*As of November 16, 2009*

## MARQUEE PARTNERS

### FOUNDING PARTNER (\$25,000+)

Lucille and Dave Viola, Sr.

### INVESTING PARTNERS (\$10,000+)

\*Mr. and Mrs. Francis G. Adams, Jr.  
\*Richard T. Cersosimo and Valerie J. Koif  
Mr. and Mrs. Jerry K. Day  
Steve and Sharon Finger  
Mr. and Mrs. Gerald Lazar  
Michael and Jo-Ann Price  
Mr. and Mrs. DeRoy C. Thomas  
Dona and Roland Young

### EXECUTIVE PRODUCING PARTNERS (\$7,500+)

Robert A. and Nancy J. Franco  
Suzanne and Donald Joffray

### ARTISTIC AND TECHNICAL PRODUCING PARTNERS (\$5,000+)

Dr. and Mrs. J. R. Buchanan  
Alice Dadourian  
Mrs. Harry J. Gray  
Mr. and Mrs. William Haber  
The Kitchings Family  
Ruth Lord  
Anthony and Chelsea Michael  
\*Regina and Robert F. Neal  
Mrs. Peter E. Paris  
Saul and Hila Rosen  
Dr. Anne L. Rothstein and  
Ms. Jane Hellman  
Ted and Vada Stanley  
Mr. and Mrs. Angelo Tomasso, Jr.  
Leanne F. Trout  
\*Mark Wainger and Charles Taylor

### ASSOCIATE PRODUCING PARTNERS (\$2,500+)

Sandra Anagnostakis  
Charles Beach Barlow  
John Barlow and Scott Rudin  
Frank and Amy Campbell  
Sally and Ted Carrier  
The Christine E. Moser Foundation  
\*Kay Knight Clarke and Logan Clarke  
Mr. and Mrs. Walter W. Congdon  
Mr. and Mrs. Robert F. Coviello  
Alvin Deutsch  
Bill and Denice Feeley  
Sandy and Bob Friedman  
Reginald H. Fullerton, Jr.  
Scott D. Furman and  
David L. Szankovics  
William J. Ginnetti, Sr.  
The Harry E. Goldfarb Family Foundation  
Mr. and Mrs. Ronald Goodspeed  
Mr. and Mrs. Norwick R. G. Goodspeed

John and Joanna Hamby  
Ms. Heather Henson  
Nancy and Jeffrey Hoffman  
Lynde S. and Michael Karin  
Mr. and Mrs. Robert H. Lewis  
Jack Light  
Mr. and Mrs. Charles R. Lindberg  
Thomas Fynan and William Loutrel  
Timothy and Sharon Lynch  
Mark Masselli and Jennifer Alexander  
Mr. and Mrs. George J. Michel, Jr.  
\*Mary and Elliott Miller  
Mr. and Mrs. John J. Nyikos  
Eric Ort and Duff Ashmead  
Donald G. Reed  
Lt. Col. Robert A. Riddlehoover  
Peter and Betsy Russell  
Dr. and Mrs. Gerald Sandler  
Mr. and Mrs. Henry S. Scherer, Jr.  
Donna and Bill Stamm  
Sorenson-Pearson Family Foundation  
Mrs. Ashton M. Tenney, Jr.  
Carl and Jessica Thompson  
Thomas F. Tyrseck and  
Marie V. Morosky

Muriel and Karl Fleischmann  
Raymond J. Fontana  
Samuel S. Fuller  
Zelda and Charles D. Gersten  
Betty Gilman  
Lea and Dick Goodman  
Roger C. Goodspeed  
Gordon D. Gross  
Hattie and Terry Guin-Kittner  
Ron and Nina Harris  
Al and Judy Heinke  
The Hermann Family Charitable  
Foundation  
Mrs. Harold William Higgins  
Attorney Harvey Hoberman and  
Penny Parker  
Betty Ruth and Milton Hollander  
Mr. and Mrs. Arthur Alfred Hulse  
Mr. Penfield Jarvis

\*Mr. Edward T. Kask  
Susan and Peter Kelly  
Ted and Kiki Kennedy  
Mr. and Mrs. Simon Konover  
\*Nicholas T. Lemesh  
Robin Lewis and Robert Rich  
Warner and Deanna Libby  
Mr. and Mrs. F. P. McFadden, Jr.  
Larry and Patty McHugh  
Robert Roy and Susan Metz  
Service Station Equipment Inc.  
Denis F. Mullane  
Thomas and Karen Murphy  
Peter Johnson Musto  
Mr. and Mrs. Bruce M. Newman  
Mr. and Mrs. David Ogden  
Mr. and Mrs. James Olson and Family  
\*Jane E. Ondovcsik  
Larry and Martha Parks  
Raymond and Marlene Piche  
Sam and Phyllis Pierson  
Willard and Sigita Pinney  
Philip W. Porter, Jr.  
Caitlin A. Quinn & Peter C. Garenani  
Racine Company  
Chuck and Dianne Ramsey  
J. Rosenkrantz and M. Cohen  
\*Diane M. Rottmann  
Dr. and Mrs. Jaime Santamaria  
Mrs. Benjamin Schilberg  
Richard and Mary Schneller  
\*Mr. and Mrs. William B. Seaver  
Fred and Carol Seeman  
Mr. and Mrs. Allyn Seymour, Sr.  
Mable and Richard Seymour  
Mr. and Mrs. Martin C. Shapiro  
Mr. and Mrs. H. William Shure  
Jerome and Marian Silverstein  
Richard Stapleton  
Henry Skip Steiner  
Beatrice Stokes

## THE PRODUCER'S CIRCLE

### PRODUCER (\$1,000+)

Anonymous (1)  
Mr. Daniel Adams  
General and Mrs. Elliott B. Alter  
\*Dolores L. Andrew  
Mr. and Mrs. Joseph E. Arborio  
Greg and Joyce Barabas  
Mr. and Mrs. Barton M. Bauers, Jr.  
Maxwell and Sally Belding  
Mr. and Mrs. Bruce L. Blakeslee  
David W. Bogan and Heather Hunt  
Michael Bragulla  
In Memory of Kay McGrath  
Florence L. Carples  
\*Mr. and Mrs. Terry W. Chabot  
Creative Transportation  
The Cheryl Chase and Stuart Bear  
Family Foundation  
Mr. and Mrs. Gordon U. Cobleigh  
Maury and Sonia Cohn Foundation  
Terri and Don Coustan  
Mrs. J. Noyes Crary  
Mr. and Mrs. Donald Daren  
Debra and Steven Daren  
Mr. and Mrs. David W. Dangremond  
Bill and Doris Davis  
William and Christine Donohue  
Mrs. Nathan L. Dubin  
Mr. and Mrs. Bruce M. Dutch  
Mr. and Mrs. Robert K. Erf  
Mr. and Mrs. J. Richard Farley  
Fran and Phil Feltman



# GOODSPEED MEMBERSHIP

Mr. and Mrs. William J. Stolba, II  
Mr. and Mrs. Emil Tilonia  
Donald and Sharyn Timmerman  
Michael and Florence Timura  
Gertrude Tyrol  
Arthur E. Webster, Esq.  
Mr. and Mrs. Samuel J. Weinhoff  
RADM. Louise C. Wilnot USN (Ret.) and  
James E. Wilmot  
Ms. Nicole L. Elkon and Mr. Neal S. Wolin  
Jef and Kate Wolter  
Ferns and Peter Youmans  
Mrs. Valentine Zahn

## ASSOCIATE PRODUCERS (\$500+)

Anonymous (4)  
Sandy and Dave Adams  
Mrs. Ronald F. Agostini  
Fred and Roberta Allardyce  
Robert C. Alwine  
Billie and Peter Anker  
\*Ed and Eileen Annino  
Mr. and Mrs. John C. Arena  
Mary B. Arnstein  
Bette and Bruce Avery  
Mrs. Jack Axelrod  
Sherri and Scott Baggett  
\*Mr. and Mrs. Ray Barker  
Cynthia Bates and Jonathan Russell  
Mr. and Mrs. Edwin L. Baum  
Denise Bernardo and Edwin Muentes  
Merle and Ron Bernstein  
Bishopsgate Inn  
Mr. and Mrs. Curtis L. Blake  
Alan Blanchard  
\*Dr. and Mrs. Richard F. Bloom  
\*Mr. and Mrs. Gustaf R. Bodin  
Jan and Ron Bogdan  
Kenneth and Judith Boudreau  
Stephanie M. Branta  
Nadine and Robert Britton, III  
Helen Babcock and Tom Buttacavoli  
S. E. Canaday, Jr.  
Paul C. and Patricia B. Carlson  
\*Michael and Barbara Cerrina  
Mr. Michael Chapin  
Colchester Mill Fabric  
Mr. and Mrs. Richard Chiaramonte  
Anne and Gabe Choquette  
Barbara L. Clark  
Scott and Jo Cleary  
Mr. and Mrs. Charles A. Clinton  
Marilyn and Ted Colvin  
Lynette and Linc Cornell  
Donald and Saundra Costantino  
Omar Coffee Company  
Michael and Peg Curtis  
Mr. Daniel Hechtman and  
Ms. Danielle Danese  
Joel N. and Ruth Ann C. Davis  
Dr. and Mrs. Arthur C. DeGraff, Jr.  
\*Chuck Dell  
Brian and Linda Dewhirst  
\*Roy and Betsy Dickinson  
Betty Dove  
Herbert Drower  
Mary Jane Dunn  
Jean W. Earle

The Eastland Family  
Dr. and Mrs. John R. Eddy  
Gene and Vera Ehnen  
Jim and Judi Elder  
Mr. and Mrs. Michael Elgee  
\*Frederick Elia  
Gloria and Martin Feibish  
Dr. and Mrs. Brendan M. Fox  
Dr. James Frost  
Avery and John Funkhouser  
Barbara A. Gabianelli  
Rona Gelber  
Judi and Albert Glassenberg  
Gloria J. Gorton  
\*Mr. and Mrs. Mark B. Gossner  
\*David and Patricia Hadlow  
Newell and Betty Hale Fund of  
Greater Worcester  
Mr. and Mrs. Burt Hallisey  
\*Richard B. Hanrahan  
Al and Betsy Harris  
Hastings House Antiques  
Brian and Karen Henderson  
Sue Hessel and Karen Dahle  
William Hewitson  
\*Claudette, Ned, Maeve and Ciara  
Prudence Hoffman  
Diana and Paul Hughes  
James and Isabel Jackson  
Barbara and Ray Jacobsen  
Mr. and Mrs. Scott Jezek  
Lisa B. Walker & Robert Kaplan  
John S. Kartovsky  
Mr. and Mrs. Douglas E. Kehl  
Sallie L. Kemp  
Steven and Deborah Kleinman  
Ronald Klimas  
Mary Ellen Klinck  
\*Kenneth Koe  
Hans and Christina Koehl  
Abbey and Stephen Kreinik  
Darlene F. Krenz  
Frank and Elisabet Landrey  
Dr. and Mrs. Robert E. Lebson  
Mr. and Mrs. David A. Lentini  
Roger and Carla Levien  
Barbara and Ira A. Levin  
Mr. and Mrs. Brian Listro  
Jean and John Linderman  
Dr. and Mrs. Koen Loeven  
Peter and Rosemary Lombardo  
Mary Kay Long and Dennis F. Unites  
Phyllis and Ray Losnes  
Mr. and Mrs. Arthur Lovell, Jr.  
Joseph G. Lynch  
Mr. and Mrs. Robert J. Lyons  
Mr. and Mrs. William C. Lyons  
Douglas R. Magee, Jr.  
Dr. Clare Manzi and  
Dr. Vincent Williams  
Mr. and Mrs. Thomas Marra  
Robert K. Mason  
Ken Maxwell and Arlene Tunney  
\*Joseph and Nancy Mazza  
Jay McAnally  
McCarty & Sons  
John and Amy McCauley

Andrew and Bonnie Lee McKirdy  
Mrs. John F. McManus, III  
Mr. and Mrs. James J. Melo  
Tom and Mary Mielt  
Sandra Milles  
Francis J. Morison  
Kevin Murphy  
Dr. and Mrs. Thomas J. Murphy  
Robert and Carolyn Nelson  
Naomi and Jerry Neuwirth, M.D.  
David I. Newton  
Allen J. Novakouski and Daniel J. Hutton  
Brian O'Brien  
Mr. and Mrs. G. Robert O'Brien  
Mr. David Ogden  
William Orsini and Walter Smith  
\*Loren and Elaine Otter  
Dr. and Mrs. John Paardenkooper  
\*Peter and Candace Pappas  
R.A. Parady & Sons, Inc.  
\*Ron and Carla Pariser  
Lyn Mathews Perrin  
\*Mr. Rolf Peterson  
Rod and Lucy Petrey  
Dag and Nancy Pfeiffer  
Beverly and Brian Platner  
C. L. and Rosina Raiteri  
Thomas Redmerski  
Mitchell and Lorraine Rochefort  
Eric and Sandra Rustici  
John and Fran Sadek  
Marilyn Safenowitz  
Jane and Morley Safer  
Patricia and Andrew Salner  
Mr. and Mrs. Jacob Salzman  
Dorothy and Peter Samuels  
Susan and Russell Santora  
Mary and Joe Sargent  
Dr. and Mrs. Lee Sataline  
Linda R. Savitsky and Alvin G. Wolfram  
Dr. and Mrs. Stephen Scarangella  
Linda and Philip Scheffer  
Daniel W. and Sandra B. Schneider  
Dr. and Mrs. John Schowalter  
Jack and Bonnie Scott  
Steven R. Senter  
Fred and Barbara Sette  
\*Karen and Allyn Seymour  
Richard and Barbara Shaffer  
\*Thomas J. Shakun  
Mr. and Mrs. Edward J. Sharr, Sr.  
Mr. and Mrs. Thomas Shea  
\*Katy and Frank Sherer  
Mr. and Mrs. Anthony Shetensky, Jr.  
Louis and Tracy Shoor  
Stuart and Arline Small  
Lon and Susan Smith  
Sara Sparrow  
Rolf and Sioux Stacy-Olson  
\*Richard D. Stapleton  
Mr. and Mrs. Chris M. Steele  
Josephine Merck and James Stevenson  
Suzio/York Hill  
Mr. and Mrs. Edward C. Swift  
Dr. and Mrs. Russell Sylvester  
Jennifer Shinn and Russell Tait  
Stewart Taubkin





# GOODSPEED MEMBERSHIP

Judy B. Taylor  
\*Joe and Eunice Thomas  
\*Kathleen Thompson  
David and Laurie Title  
\*Sheila L. Tomlinson  
\*Mr. and Mrs. Paul Tracey  
Edwin B. Tuthill, Jr.  
Mrs. Arthur D. Van Winkle  
Jean B. Vogel  
Mr. and Mrs. Russell Waldo  
Judith and Steven Warner  
Patti and Howard Weiner  
Leslie and Richard Weinstein  
Victoria and William Winterer  
Haggett, Longobardi LLC  
Symond and Martha Yavener  
\*Mr. and Mrs. Robert Yudkin  
\*Eleanor E. Zajac  
Dr. and Mrs. Robert Zavod  
Nancy and George Zitnay  
\*Mr. and Mrs. Peter R. Zucco

## DIRECTOR'S SOCIETY (\$250+)

Anonymous (7)  
Mrs. Paul D. Abercrombie  
Richard and Merrill Adams  
Seth and Katey Adams  
Taggart Adams  
William D. Addison, Jr.  
Barbara Agar  
Dr. and Mrs. Sultan Ahamed  
Howard J. Aibel  
Rose M. Allen  
Mary Allingham  
Karen and Norman Alterman  
Phyllis and Vincent Amato  
Ray Gaulke & Sydney Anderson  
Dr. and Mrs. C. Wallace Andrias  
Paul and Christine Antaya  
Charles J. Anthony  
Martha Atkinson and Deborah Lyon  
Mr. and Mrs. William G. Atkinson  
Mr. and Mrs. Hillel J. Auerbach  
Robert Babcock  
John, Nancy and Nikki Baccaro  
\*Paul, Cinda, Jay and Sam Barbuto  
Michael and Shelley Barker  
\*Mr. and Mrs. David N. Barry  
Mr. and Mrs. Edward D. Barry  
Myrna Baskin  
Michele and Sherman Baumann  
Cynthia and Allen Beavers  
Deborah Beebe  
Debra and John Bekish  
David A. and Alice C. Belden  
Mrs. Ellen W. Bell  
Gary and Ruth Benanav  
G. Spencer Berger  
Randee and Martin Berliner  
Lynette Bester and Family  
Donald Bidwell  
Joseph and Kerry Biega  
Barbara and Barton Bienenstock  
Mr. and Mrs. J.P. Bischoff  
\*James Blackburn  
G. Howard Blythe

Wallis and Laurie Boyd  
Don and Susan Boyle  
The Bradford Family  
Attorney and Mrs. Peter F. Brady  
\*Liliane T. Braman  
\*Gordon W. Braudaway  
William and MaryEllen Bridges  
BrandTech Scientific, Inc.  
Joyce and Harold Buckingham  
Eugene and Ann Buckley  
Eileen Buckley  
Mr. and Mrs. John F. Budd, Jr.  
\*Carla and Richard Bue  
Frank and Shari Bugaj  
Peter S. and Sally R. Burgess  
Mr. and Ms. Robert Butkus  
Edward Cape  
Anne and Jim Carroll  
Robert and Carole Carter  
\*Leon and Marilyn Case  
George and Frances Caspar  
Greg and Melinda Castanza  
Michael Chaiklin  
Theodore S. Chapin  
Ms. Karen Chase and  
Dr. Charlie Dickson  
Richard O. Cheney  
John and Rosanna Chidsey  
Kyung H. Chung, M.D.  
Jack and Bertie Chuong  
Robert E. Cienian  
\*Janet and Tim Clark  
Peter and Marcelyn Clarke  
Marshall Cohn  
Philip and Clio Coles  
Andrew and Elizabeth Comcovich  
Dr. and Mrs. Michael M. Conroy  
Gloria K. Corbit  
Gary and Carol Corliss  
Cornerstone Construction Services, Inc.  
Cove Navigation, LLC  
Holly and Steven Craig  
Dr. Amy Crockett  
Mr. and Mrs. Samuel D. Crum, Jr.  
Joan K. Curry  
Henry F. Curtis  
Michael and Gail Cutler  
Eric and Patricia Daniels  
Eric Dawicki  
Stanley K. Dean  
Deborah Dembo  
\*Mr. Eugene Dessureau  
Sherrie Deveau  
\*Linda W. DeYoung  
Arthur and Edythe Director  
Mrs. Martha Dobruck  
Mr. Jonathan Dodd  
Mr. Steven Dodd  
John and Pat Doolittle  
\*Dr. and Mrs. John E. Dreslin  
David and Deborah Dressler  
Herbert Duey  
Rose and Louis Dunlap  
Mary Jane Dunn  
\*Mr. and Mrs. David R. Edwards  
Jim and Judi Elder  
J. Andrew Engelhardt

Mrs. Carol Engle  
Eloise Epstein  
Mrs. Florence R. Ergin  
Jon and Anna-Lena Estes  
Mr. David Fallon  
Jackie and Bill Falman  
Michael F. Farina, Jr.  
Rhoda and Arthur W. Feinstein  
Ann Field  
Earle Finch  
EMCOR Services -  
New England Mechanical  
Dr. and Mrs. William Fitzgerald  
David and Judy Fleischer  
Lynne and Richard Fletcher  
Brenda and Chad Floyd  
Frances Forde  
\*Janet M. Forgey  
Mr. and Mrs. Raymond Fornwald  
The Honorable and Mrs. Frederick A.  
Freedman  
Eula and Glenn Fresch  
Frank Frey  
Donna and Ed Fuhrman  
Ms. Mary E. Gabriele  
Dr. and Mrs. Gregory J. Gallivan  
Cleveland W. Gardner  
The Reverend and Mrs. Ronald S. Gauss  
Carol and David Geyer  
Rick Gibbons  
Mario S. Gioco, CPA  
Wil and Mary Ellen Gladue  
Elizabeth D. Godbout  
Mr. and Mrs. Samuel Golding  
\*Dr. and Mrs. Donald Gonci  
Dr. and Mrs. Lawrence Goodman  
Francis M. Gordon  
Mr. and Mrs. Malcolm Graff  
Ray and Judy Grasso  
Bill Gratz and Jay Bruno  
Carole and Harold Greenbaum  
\*Mr. and Mrs. Michael Groenhout  
\*Mr. and Mrs. Roger Gross  
Peter and Barbara Guerra  
Mr. and Mrs. Robert P. Haff  
Mr. Stephen Hahn  
Mark and Julie Haight  
Dr. and Mrs. John J. Haksteen  
Bill and Paula Harkins  
Mr. and Mrs. Arthur H. Harris, Jr.  
Dwight and Pat Harris  
Sue Hart  
Michael Hassam  
Pat and John Hechavarría  
\*Mr. and Mrs. Donald P. Henry  
Sandra S. Hewitt  
T. Donald and Helene Hirschfeld  
Betsy Sage and Stephen Hitriz  
George and Joan Hogan  
Mr. and Mrs. Robin Honiss  
Paul Horoschak  
Ms. Deborah Horton  
Barbara and John S. Hubbard  
Alan and Ann Hughes  
Mr. and Mrs. Leslie A. Hyatt  
Daryl and David Ifkovic  
Lou Blumenfeld and Jacqueline Isaacson



# GOODSPEED MEMBERSHIP

Amy Jacques-Purdy and Brian W. Purdy  
Mrs. Curtiss Johnson, Jr.  
Hugh Jones  
Stephen R. Jones  
Irene Junge  
John and Betty Kelly  
Nancy Mattoon Kline  
Michael J. Klingensmith and  
Ruth A. Shields  
Dr. and Mrs. Kort C. Knudson  
George S. Koczon  
Mrs. Walter O. R. Korder  
Jerry and Bunni Korman  
Dr. and Mrs. Steven Korn  
The Kozliks  
Max and Ruth Kuziak  
Sheila Laing  
Rev. Roger J. Lamoureux  
Fred and Jo Langhoff  
R.N. LaRosa Corp.  
\*Ken and Barbara Larson and  
Thelma and June  
Lance LaShelle  
\*Mary and George Laursen  
Dr. and Mrs. Stanley Lavietes  
Harmon and Elizabeth Leete  
Jane Leibowitz  
Mr. and Mrs. Terrence T. Lescoe  
Coleman and Judie Levy  
Mr. and Mrs. James Lianos  
Lorraine Lieberman  
Mr. and Mrs. Louis Loffredo  
\*Roberta and Joseph Lombardino  
\*Mr. and Mrs. William Longa  
Karin and Thomas Longo  
Ian and Sylvia Lucas  
Lou Ludgin  
Mr. and Mrs. Ian G. MacDonald  
\*Emanuel and Irene Makiaris  
Mr. and Mrs. James M. Makuch  
William Manafort  
Anita and William Mancoll  
Mr. and Mrs. John F. Mangold  
Arthur and Elizabeth Maniatty  
Attorneys Linda Mariani and  
David Neusner  
John T. Martick  
Dr. and Mrs. Keith Martin  
Mr. and Mrs. Jack Matava and Family  
Mr. and Mrs. Frederick Maynard, Jr.  
Donna McArdle  
Kevin and Jean McCarthy  
Paul and Jan-Gee McCollam  
Virginia S. McCurdy  
Phyllis McDowell  
Mr. and Mrs. Victor McGrady  
Jim and McIntyre  
Mr. and Mrs. John McParland  
Jacqueline and James McWilliams  
\*Mr. and Mrs. Ronald B. Meehan  
Mary Miko and Joseph Migliaro  
Mr. and Mrs. George B. Miles  
\*Alf Millard and Barbara Butler

John and Patricia Miller  
Margie and Lance Minor  
Meg and Scott Mocoski  
Nancy O. Moreland  
Thomas Moriarty  
\*Mr. and Mrs. Floyd A. Morley  
Jan and Harold Moskowitz  
Mr. and Mrs. Kenneth A. Munson  
Mr. and Mrs. Stephen J. Negri  
Andrew and Jodie Nevas  
Gail and Anthony Newman  
Matthew Newton Family  
Dr. Debra B. Nevas and  
Dr. Jonathan T. Abrams  
William Nivison  
Mike and Gwen O'Connell  
Daniel Offutt  
\*Arlene Oleksy  
Cecil J. Olmstead  
Alan and Joyce Ortner  
Rea and Mary Ann Outman  
Charles H. Owens  
Mr. and Mrs. Paul Palmer  
Carl and Alyvra Pavano  
\*William and Andrea Phinney  
Patrick L. Pinnell  
Chris and Beth Pitt  
Angela and Tim Ploszaj  
Mary and Lawrence Pocknett  
Mr. and Mrs. Myron J. Poliner  
Mark and Traci Polinsky  
Steven and Halina Potter  
Charles and Janis Potts  
Mr. and Mrs. John F. Poutot  
Annella C. Preble  
Rev. and Mrs. Marsron Price  
\*Cathy and Jim Probulus  
John and Georgette Quilter  
\*Kate and Steven Rakowski, CFA  
John Reed  
Dr. and Mrs. Howard L. Reuben  
Mr. and Mrs. Jeffrey D. Robbins  
Alix Rokita  
Mr. and Mrs. Jerald K. Rome  
\*Rich and Pat Rosien  
Gary Rounseville  
Neil and Lynn Ruenzel  
Ms. Maggi Ryan  
Mary Anne and James Ryan  
James Salvatore  
Anthony and Rita Santostefano  
Ron and Cleora Savitski  
Ann P. Sawicki  
Dr. Robert and Lindley Sawyer  
David and Jane Schaiman  
William J. Scheide  
Yankee Courier Services  
\*Mr. and Mrs. Alan Schiff  
Karl and Judy Schumacher  
Mr. and Mrs. Stephen Schwartz  
Thomas Schwenke, Inc.  
Mr. and Mrs. Edward Scovel  
\*Kathryn Smith and Andrew Seddon

Ted and Mary Jo Shen  
Sonia and Mark Shipman  
Donald and Karen Shirer  
Shoreline Electric Car, LLC  
\*Francis and Lorette Simcik  
John and Millie Simonzi  
Mr. and Mrs. David Sloan  
Mr. and Mrs. Lawrence A. Smedberg  
Jack Solan  
\*Alex and MaryAnn Stein  
Joan and Tom Steitz  
Joan and David Stewart  
Tom and Bonnie Stone  
\*Steven Sudigala  
\*Ann Sullivan  
John H. and Susan Sullivan  
Mr. and Mrs. Kenneth Summerer  
Carol Z. Sundlin  
Michael Sundquist and Laura Richardson  
Mr. and Mrs. Richard W. Swan  
Mr. Allyn F. Sweet  
Charleen Taylor  
Peter H. Taylor  
Dorothy, Kathleen, Ann & Arthur Thompson  
Lincoln Thompson, Jr.  
Mr. and Mrs. John M. Timken  
Jean Titterington  
Mr. and Mrs. James J. Toomey  
Laura and Harold Trinkoff  
Larry Trudeau  
Neal Tuohy, Jr.  
Henry J. Turco  
John and Judy Turpin  
Bruce C. Tuthill  
Strelunkus Bohunkas  
Ragged Rock Marina  
Mr. and Mrs. Edward Voskowsky  
Dr. and Mrs. Milton Wallack  
Jerry and Linda Wanosky  
Burton J. Warner  
Michael and Ellen Wasyl  
\*Claire and Nick Weiler  
Bob and Roz Weinstein  
Ken and Cathy Welch  
\*Mr. and Mrs. Richard M. Wenner  
Mrs. Donald Wheeler  
Michael and Bridget Wheeler  
David and Margaret Wilcox  
Babs and Kate Wilkinson  
\*Dr. Richard and Brenda Williams  
Mr. and Mrs. George W. Wilson  
Mr. Frederick S. Winkley  
Mr. and Mrs. Michael Wolchesky  
Mr. and Mrs. Clifford Wood  
Peter and Joyce Wortman  
Mr. and Mrs. Richard I. Wrubel  
William and Joan H. Wynne  
\*Jim and Mary Yanosy  
March and Lorry Young  
Dr. and Mrs. Francis W. Zak  
Arthur Zieky and Bill Witkowski  
Mr. Richard Zilinskas  
Dr. and Mrs. James Zwerneemann



## GOODSPEED MEMBERSHIP

*Goodspeed Musicals acknowledges the following corporations that have provided matching gift contributions for Goodspeed Members this season. Members with an asterisk (\*) next to their names have received these donations from their employers.*

Aetna Foundation  
Allied World Assurance Company  
American Express Foundation  
American International Group, Inc.  
Amica Companies Foundation  
Argonaut Group, Inc.  
AT&T Foundation  
Bank of America  
Chubb & Son  
CIGNA Corporation  
Diageo North America  
Dominion Foundation  
ExxonMobil Corporation  
Gartner Matching Gift Center  
GE Foundation

General Re Corporation  
GlaxoSmithKline Foundation  
The Hartford Courant  
IBM  
J.P. Morgan Chase Foundation  
Johnson & Johnson  
John Hancock  
Lincoln Financial Group Foundation  
Macy's Foundation  
Mass Mutual Financial Group  
The Meredith Corporation Foundation  
Merrill Lynch  
Mobil Foundation, Incorporated  
New York Times Company Foundation  
The Northrup Grumman Foundation

NRG Global  
Pfizer  
Pfizer Pharmacia  
The Phoenix Companies  
Pitney Bowes  
Prudential  
Saint-Gobain Corporation  
The Stanley Works  
Time Warner  
Travelers Insurance Company  
Unilever  
United Technologies Corporation  
Verizon  
Wachovia

---

*Goodspeed Musicals gratefully acknowledges the following staff for contributing to the 2009 Employee Campaign.*

Anonymous (2)  
William Addison, Jr.  
Robert C. Alwine  
Cinda and Paul Barbuto  
Mr. and Mrs. Sherman D. Baumann  
Linda Benson  
Sara and Neil Breen  
Michael and Lori Cartwright  
Susan M. Cipriani  
Mr. and Mrs. Timothy D'Amato  
Jennifer O. Etheridge  
Paulette Ganoe  
Gloria J. Gorton

R. Glen Grusmark  
Hattie and Terry Guin-Kittner  
Donna Lynn and Jay Hilton  
Kim Kane  
Erica Largen  
Shanna Lisitano  
Mr. and Mrs. David Loffredo  
Kristan McLaughlin  
Dan McMahon  
Mary Miko and Joseph Migliaro  
Linda Misarski  
Mr. and Mrs. Stephen Moore  
Sarah Moulton

William Nivison  
Michael O'Flaherty  
Will Rhys and Nancy Kluck  
John Riccucci  
Mr. and Mrs. Jeffrey D. Robbins  
Mr. and Mrs. Gerald Rucker  
Samantha Scaniffe  
Elizabeth Smith  
Roger-Paul Snell  
Beryl and Henry Thorpe  
Babs and Kate Wilkinson



# GOODSPEED MUSICALS STAFF

## ADMINISTRATION

Harriett Kittner..... *General Manager*  
 Edward C. Blaschik..... *Theatre Manager*  
 Mary Miko..... *Associate Theatre Manager*

Donna Tafel..... *Assistant to Michael P. Price*

William F. Nivison..... *Director of Finance*  
 Joanne D'Amato,  
 Samantha Scaniffe..... *Accounting Assistants*

Caitlin A. Quinn..... *Director of Development*  
 Sara Breen..... *Manager of Corporate  
 and Foundation Relations*  
 Gloria Gorton..... *Director of Major Gifts*  
 Sue Cipriani..... *Development Operations Manager*

Dan McMahon..... *Director of Marketing and  
 Public Relations*

Lori A. Cartwright..... *Advertising Manager*  
 Elisa G. Hale..... *Public Relations Manager*  
 Diane Sobolewski..... *Official Photographer*  
 Briana M. Bridgewater,  
 Peter Carey..... *Marketing Interns*

Michele R. Baumann..... *Member Relations Manager*  
 Shannon Robbins..... *Membership Secretary*

Cinda Abercrombie Barbuto..... *Ticket Sales Manager*  
 Elizabeth Diamond..... *Box Office Manager*  
 Rachael N. Carlson..... *Assistant Box Office Manager*  
 Roger-Paul Snell..... *Box Office Supervisor*

Lynn Collins-Rucker,  
 Madeleine Holly, Catherine Joseph,  
 Shayne Lein, Shanna Lisitano,  
 Barbara Wilkinson..... *Box Office Representatives*  
 William Addison..... *Subscription Services Manager*  
 Kimberly Kane, Linda Misarski... *Subscription Services  
 Representatives*  
 Meg C. Chapell..... *Group Sales Manager*

Kristan McLaughlin..... *Company Manager*  
 Kim Carr..... *Assistant Company Manager*  
 Kimberly Tredinnick..... *Company Assistant*

Joshua S. Ritter..... *Education Director/Librarian*  
 Marissa Clement..... *Education Intern*  
 Jeffrey Mays..... *Systems Administrator*  
 Linda Benson..... *Receptionist*

Paulette C. Ganoe,  
 Beryl W. Thorpe..... *House Managers*  
 Barbara Ford, Kim Gowac,  
 Brittany Halleck, Sarah Moulton,  
 Gwen Pond, Diane Rottman..... *Assistant House Managers*  
 David Loffredo, Louie Loffredo,  
 Pat Logan..... *Bartenders*  
 Marilyn Rybak..... *Building Services Assistant*  
 Edward Locke, Stephen Moore,  
 Robert Myska..... *Building Services*

## PRODUCTION

Adam Goodrum..... *Interim Technical Director*  
 Chris Phillips..... *Master Carpenter*  
 Tyler Donahue..... *Shop Carpenter*  
 Mic Murphy..... *Stage Carpenter*  
 Aaron Peraza-Baker..... *Deck Carpenter*

Carla Tiezzi..... *Charge Scenic Artist*  
 Laura Prengaman..... *Staff Scenic Artist*

Ellen Lampros..... *Props Manager*  
 Troy A. Junker..... *Master Artisan*  
 Carrie Capizzano..... *Props Artisan*  
 Thomas Stephansky..... *Journeyman Artisan*  
 Lou Fuchs..... *Props Carpenter*

John Riccucci..... *Wardrobe Master*

Jay Hilton..... *Lighting and Sound Supervisor*  
 Jennifer Kiser..... *Master Electrician*  
 L. Clay Little..... *Production Electrician*  
 Jessica Murphy..... *Production Sound Engineer*

Erica Largen..... *Assistant Production Manager*

Jennifer O. Etheridge..... *Costume Rental Manager*  
 Dawn Barlow, Sarah Bowen, Gail Fresia,  
 Susan McCann, Njaye Olds..... *Costume Rental Assistants*

## FOR THIS PRODUCTION

Jennifer Schriever..... *Associate Lighting Designer*  
 Emma Mead, Allegra Sargent... *Wardrobe Assistants*  
 Heather Klein, Mary Spadoni... *Production Assistants*  
 Tonett Smith..... *Props Run Crew Head*  
 Monica Johansson..... *Makeup Artisan*  
 Kathy Crowley, Mike Lastella,  
 Alex Zinovenko..... *Electricians*  
 Laura Fickley..... *Sound Assistant*  
 James Stenborg..... *Music Copyist*  
 Molly Sturges..... *Piano Technician*

Ashley Leitzel-Reichenbach..... *Makeup Designer*

Christine Botta, Krista Franco,  
 Patti Lizotte, Phyllis Tela,  
 Samantha Yaeger..... *Scenic Artist*

Brianne Hiroya, Eric Miller..... *Apprentices*

*Elaine McKirdy Student Apprentice: Alex Jainchill*

*Mohegan Sun Apprentice: Tonett Smith*

*William Ivey Long Costume Apprentice: Monica Johansson*

Puppets and costumes created by the Jim Henson Company.  
 Connie Peterson, Jason Weber, Polly Smith,  
 Chelsea Carter, Marc Borders, Elizabeth Hara,  
 Lara MacLean, Heather Asch... *Costumes*  
 Rollie Krewson, Molly Light,  
 Colette Nickola..... *Puppets*  
 Peter Brooke, John Criswell,  
 Julie Zobel, Tom Newby..... *Puppet Effects*  
 Stacey Weingarten, Raphael Mishler,  
 Meghan Gaber, Morgan Street,  
 Naomi Koffman,  
 Rekha Shankar..... *Interns*  
 Endia Burrows, Jason Seck, Alana De Matteo,  
 Joseph Roddy, Michael Oosterom,  
 Elyssa Di Giovanni..... *Production Team*

## IN APPRECIATION

Goodspeed Musicals would like to thank the following for their contributions to our productions: all who volunteer their time and talents to Goodspeed, the Goodspeed Opera House usher staff, the Goodspeed Guild and Production Committees, Mae Wantanabe of ZCMI Flower Shop.



## for your INFORMATION

### **BOX OFFICE HOURS:**

Monday & Tuesday: 10 a.m. – 5 p.m.  
Wednesday & Thursday: 10 a.m. – 8 p.m.  
Friday & Saturday: 10 a.m. – 8:30 p.m.  
Sunday: 10 a.m. – 7 p.m.

**Box Office Telephone:** 860.873.8668

**Box Office E-mail:** [boxoffice@goodspeed.org](mailto:boxoffice@goodspeed.org)

### **Bar and Gift Shop:**

The Goodspeed Porch Bar and Gift Shop, located on the main floor, are open one hour prior to performances and during intermission.

### **Website:**

Visit our website at [goodspeed.org](http://goodspeed.org) to buy tickets 24 hours a day or learn more about upcoming and past productions at Goodspeed!

### **Infra-red Hearing System:**

The Goodspeed Opera House offers the Sennheiser infra-red hearing system to assist hearing-impaired patrons through the generosity of Carol Sirot. Free headsets are available from the box office.

### **Special Services:**

Goodspeed provides elevator service to the orchestra level of the Opera House. To avoid the steps in front of the theatre, please ask for a House Manager when you arrive. You will be directed to our elevator at street level outside the building. Handicapped parking is located in front of the Gelston House. If you require special assistance of any kind (for example, to remove a theatre seat to accommodate a wheelchair, early admittance to the theatre, or assistance getting to your seats), please inform the Box Office when you purchase your tickets.

### **Parking:**

Free parking is available to Goodspeed patrons. Turn right after the Gelston House when passing the theatre and free parking is on the right. A path along the river leads from the parking lot across a foot bridge to the theatre.



### **Goodspeed Guild:**

The Goodspeed Guild is a volunteer organization dedicated to supporting Goodspeed Musicals' operations and productions. Since 1975 it has provided services to artists, patrons, and staff on a year-round basis, while offering its members the opportunity to become part of the behind-the-scenes activities at Goodspeed. To find out about volunteer opportunities that fit your interests and schedule, visit our website at [goodspeed.org](http://goodspeed.org) or contact Amy Campbell at 203.494.7328.

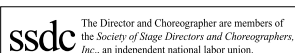
*Sets, costumes, and props are designed especially for the Goodspeed Opera House and are built in Goodspeed Musicals' shops.*

*Goodspeed Musicals is a professional theatre operating under an agreement between the League of Resident Theatres and Actors' Equity Association, the Union of Professional Actors and Stage Managers in the United States. Orchestra members are represented by Middletown Musicians Protective Association, Local 499, American Federation of Musicians.*

*Goodspeed Musicals is a member of The League of Resident Theatres.*



The scenic, costume, lighting and sound designers in LORT Theatres are represented by United Scenic Artists, Local USA-429 of the IATSE.



*Two Distinctive Settings Where  
Elegance Meets Excellence ...*

## **The Riverhouse at Goodspeed Station**



55 Bridge Road Haddam, CT 860.345.4100  
[theriverhouse.com](http://theriverhouse.com)

## **The Society Room of Hartford**



31 Pratt Street Hartford, CT 860.524.0796  
[hartfordsocietyroom.com](http://hartfordsocietyroom.com)



Weddings • Private Parties • Business Events • Catering

# Exceptional Caring...

*"The quality of care was exceptional - full of love, dignity, and respect. Thank you from the bottom of our hearts."*



- Short-Term Rehabilitation
- Post-operative Care
- Respite Care
- Admission 7 Days a Week
- Rehabilitation Therapy Available Daily
- IV Therapy
- Resident & Family Education

---

**Company founders winners of the CAHCF Lifetime Achievement Award for delivering the highest quality nursing and rehabilitation care.**

---



**Aaron Manor**  
3 South Wig Hill Rd  
Chester, CT  
(860) 526-5316

**Bel-Air Manor**  
256 New Britain Ave  
Newington, CT  
(860) 666-5689

**Cheshire House**  
3396 East Main St  
Waterbury, CT  
(203) 754-2161

**Greentree Manor**  
4 Greentree Drive  
Waterford, CT  
(860) 442-0647

**Lord Chamberlain**  
7003 Main St  
Stratford, CT  
(203) 375-5894

**Mystic Manor**  
475 High Street  
Mystic, CT  
(860) 536-6070



**Ryders Health Management**  
Nursing & Rehabilitation Centers  
[www.rydershealth.com](http://www.rydershealth.com)



*Growing takes time.*

*Don't try to rush it.*

When you come in to St. Germain for a Total Financial Advisory, a Certified Financial Planner will review with you your current situation — investments, mortgages, CDs, insurance, assets — and help chart a sensible plan for the future.

Call St. Germain today. We want to help you grow.

**ST. GERMAIN**  
INVESTMENT MANAGEMENT



100 Pearl Street, Hartford, CT 06103 • 860-727-9530  
1500 Main Street, Springfield, MA 01115 • 413-733-5111  
Toll Free 800-443-7624 • [stgermaininvestments.com](http://stgermaininvestments.com)





The best  
gift of all...  
**financial  
security.**

If the current financial market has you seeking good advice for the benefit and protection of those you love, call (203) 453-4771 for the peace-of-mind a local bank can provide.



**Financial  
Management  
& Trust**  
at Guilford Savings Bank  
[gsb-yourbank.com](http://gsb-yourbank.com)

***Estate Planning & Administration • Investment Management  
Trustee & Executor Services***

GUILFORD MAIN • GUILFORD PLAZA • BRANFORD • NORTH BRANFORD  
MADISON • NORTH MADISON • OLD SAYBROOK

NOT A DEPOSIT • NOT FDIC-INSURED • NOT INSURED BY ANY FEDERAL GOVERNMENT AGENCY • NOT GUARANTEED BY THE BANK  
MAY GO DOWN IN VALUE • SUBJECT TO INVESTMENT RISK • SEEK LEGAL ADVICE REGARDING LEGAL OR TAX MATTERS FROM A QUALIFIED ATTORNEY